



CONTENT

Premium Tapered Implants Range

Company

- 05 Bio3 Implants Company
- 06 Package Overview

Implants

- 07 Progressive Implant
- 13 Advanced Implant

Suprastructures

- 19 Gingiva Healing Abutments
- 22 Straight Anatomic Abutments
- 23 Straight Abutments
- 24 Angled Abutments 15°
- 25 Angled Abutments 25°
- 26 Multi-units
- 30 Manuals
- 32 Ball Attachments
- 33 Locators
- 34 Titanium Basis with a Plastic Cap
- 36 Prosthetics for CAD/CAM
- 39 Burnout Abutments
- 40 Laboratory Analogs and Transfers
- 41 Impression Removal Transfers

Kits

- 42 Bio3 Surgical Kit
- 44 Bio3 Guide Surgical Kit

Instruments

- 47 Instruments
- 49 Bone Taps

Supportive Products

- 51 Bio3 Bone Graft
- 52 Bio3 Osseointegration Monitor
- 53 Bio3 Vitamin Complex
- 54 Bio3 Implant Care Foam

OUR PRODUCTS

Bio3 BONE GRAFT

see page 51



Bio3 OSSEOINTEGRATION MONITOR

see page 52



Bio3 VITAMIN COMPLEX

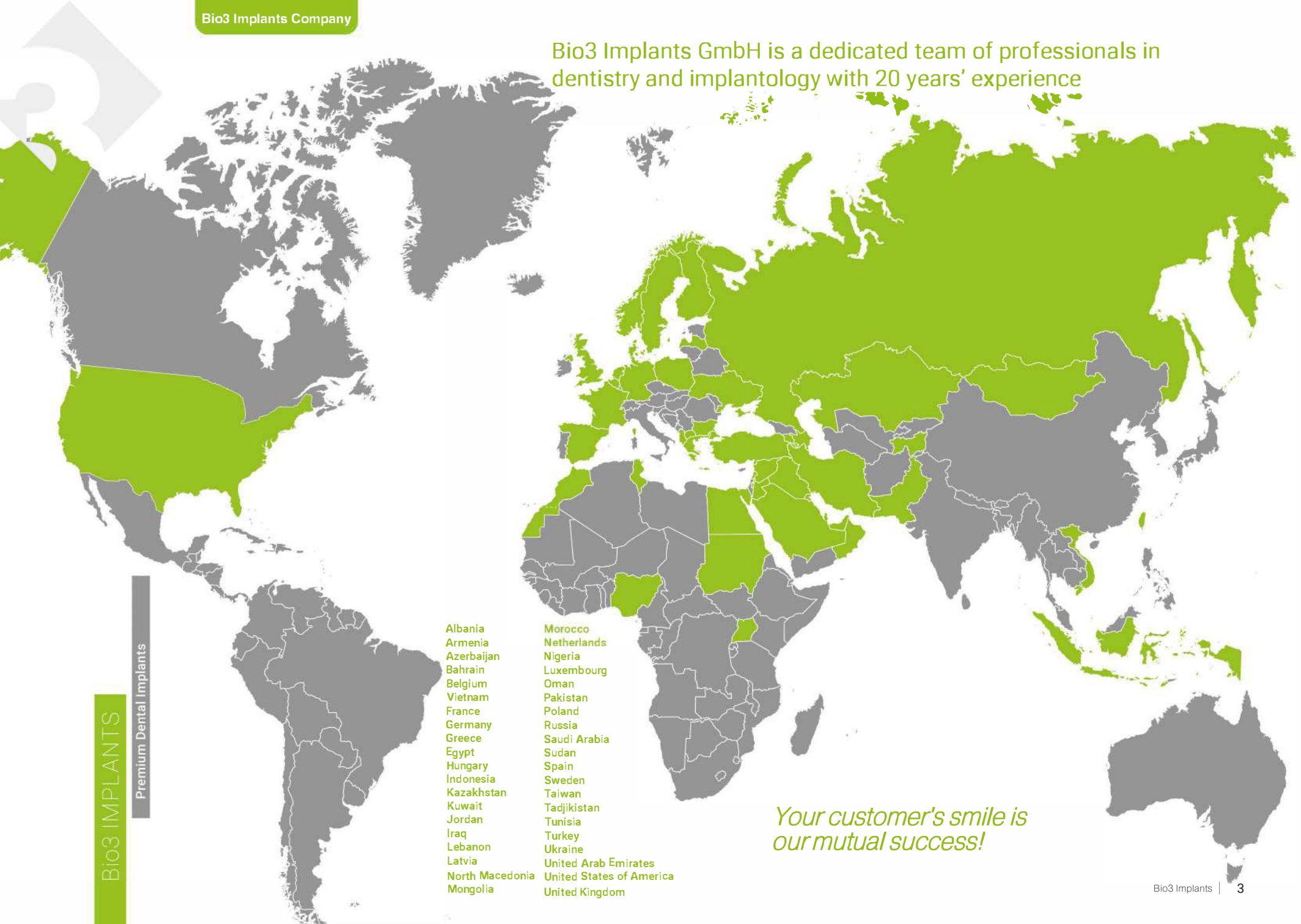
see page 53



Bio3 IMPLANT CARE FOAM

see page 54

Bio3 Implants GmbH is a dedicated team of professionals in dentistry and implantology with 20 years' experience



Bio3 IMPLANTS

Premium Dental Implants

- Albania
- Armenia
- Azerbaijan
- Bahrain
- Belgium
- Vietnam
- France
- Germany
- Greece
- Egypt
- Hungary
- Indonesia
- Kazakhstan
- Kuwait
- Jordan
- Iraq
- Lebanon
- Latvia
- North Macedonia
- Mongolia
- Morocco
- Netherlands
- Nigeria
- Luxembourg
- Oman
- Pakistan
- Poland
- Russia
- Saudi Arabia
- Sudan
- Spain
- Sweden
- Taiwan
- Tadjikistan
- Tunisia
- Turkey
- Ukraine
- United Arab Emirates
- United States of America
- United Kingdom

Your customer's smile is our mutual success!

Bio3 IMPLANTS CONNECTION

Premium Tapered Implants Range

Bio3 Conical
Connection



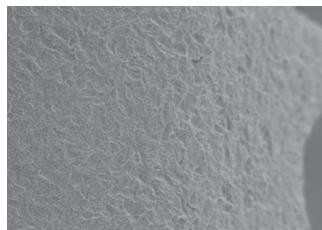
BIO3 TAPERED IMPLANT SYSTEM PROVIDES AN IDEALLY TIGHT CONNECTION BETWEEN THE IMPLANT AND THE ABUTMENT

Researches show that sand-blasted and acid-etched surface stimulates bone tissue growth throughout the entire implant body, which provides high mechanical stability and osseointegration in much shorter terms.

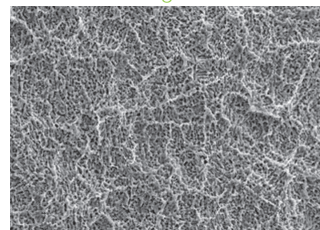
These unique properties allow to perform orthopedic rehabilitation at an earlier stage and reduce the risk in the process of implant placement under one-stage protocol.

Bio3 IMPLANTS SURFACE

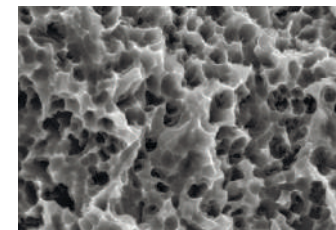
1800 magnification



3000 magnification



5000 magnification



The surface of an implant is formed by a coarse sandblasting with corundum particles, leading to a macro-roughness of the Titanium surface. Further it is etched with acid to get micro-roughness. As a result, micro-fractures of 2-4 microns are formed, and the processed area acquires an ideal surface relief for cells engraftment. This surface is not microporous, therefore it provides space for tissue inclusion, which reduces bacteria growth.

Bio3 Implants surface has been developed to achieve a high percentage of bone-to-implant contact.

Bio3 IMPLANTS COMPANY

Premium Tapered Implants Range

Bio3 IMPLANTS

Bio3 Implants is the synergy of the best achievements of the German dentistry school and innovative global developments.

Bio3 Implants GmbH is a German company, which offers dentists the best solutions of the highest quality and accuracy in implantology. We develop, produce and implement reliable and quality implant systems of premium line with conical connection.

Bio3 Implants team tends to make implantation simple, easy, high-quality and highly gentle for the patient. To achieve this goal the company develops innovative premium quality products as well as provides its customers with a high standard service.

Reliability and quality

Bio3 Implants conducts continuous and systematic quality control of all products which is confirmed by international quality standards ISO 13485:2016, **CE** 2797.

During the past years the company extended its production with the most advanced high-tech equipment. Technological cycle of Bio3 Implants production is ensured by high standards of German quality.

All products go through several stages of quality control.

Identification and warranty

Each Bio3 Implants product is assigned with a unique serial number that allows to track the history of the product manufacturing from the first to the final stage. Bio3 Implants provides a lifetime warranty on all its products. Each implant includes Warranty Card, Product certificate and a manual for the patient.

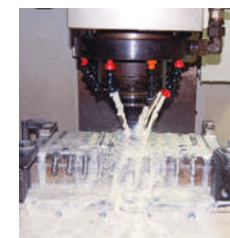
Compactness and availability

We offer a simple and reliable solution for all possible clinical situations. The doctors use only one surgical kit to perform operations on all implant types. Bio3 implant system has 2 platforms for implants with conical connection and internal hexagon fixation for absolute stability.

Service and Training

The company pays big attention to the service support of our clients in all countries of the world. Bio3 Implants organizes specialized lectures, specialized educational courses and programs, as well as workshops and seminars for implantologists, prosthodontists and dental technicians in multiple different countries.

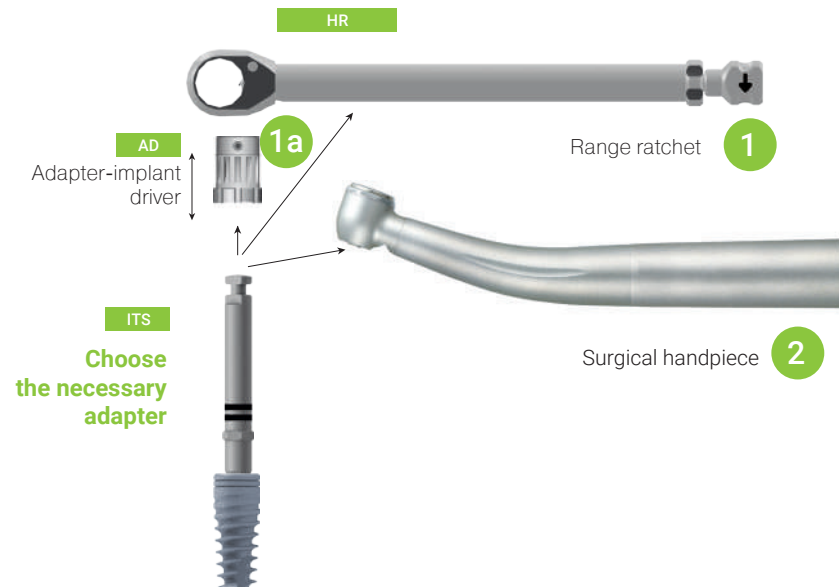
We are proud of Baden-Wuttemberg to be the homeland of our production alongside with world-known German brands. Our team is always happy to invite you to take a tour of our factory in the beautiful city of Pforzheim.







PACKAGE OVERVIEW

Extraction of the implant from a titanium sleeve




The utmost protection of our implants is ensured by a double security package. Each implant is kept in an individual Titanium sleeve placed in a sterilized blister to avoid any contacts with foreign particles

-  Hesteller
-  Artikelnummer
-  Chargencode
-  Verwendbar bis
-  CE-Kennzeichnung
-  Sterilisiert durch Bestrahlung
-  Gemäß US Bundesgesetz darf dieses Produkt in den USA nur an ausgebildete Mediziner oder in deren Auftrag verkauft werden


Implant Progressive 

REF PT13.3/11.5.
S D 3.3 L 11.5.
LOT 0351769418

2026-07 23°C

STERIL R 

Bio3 Implants GmbH
 Hanauer Str. 8, 75181 Pforzheim,
 Germany.



Bio3 IMPLANT PROGRESSIVE

Tapered dental implants range



CONICAL CONNECTION & INTERNAL HEX

Conical connection with inner hex provides precise implant-abutment contact and results in excellent compression reduction in a cervical part of the implant.

Conical connection is completely isolated from bacteria and shows excellent results in compression reduction in implant cervical part.

CHARACTERISTICS

Spiral-shaped aggressive thread guarantees a better primary stability of an implant. It is recommended for III and IV bone tissue types.

Conical implant body perfectly complies with the drill shape for more precise bone fitting. Non-invasive apical implant part prevents from anatomical damage during sinus lifting procedure.

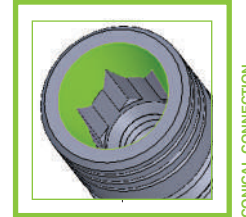
- 2 Platforms:
Standard: D3.3 mm, D3.8 mm
Wide: D4.2 mm, D5.0 mm
- Platform switching
- Internal Hexagon

SURFACE

The surface of Bio3 implants is achieved by sandblasting and acid etching according to the latest quality norms and regulations.

APICAL PART

Precise design of implant apical part prevents from bone structure damage and gives an opportunity to decrease the time of surgical treatment.



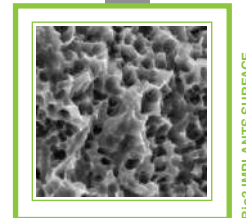
CONICAL CONNECTION



THREAD



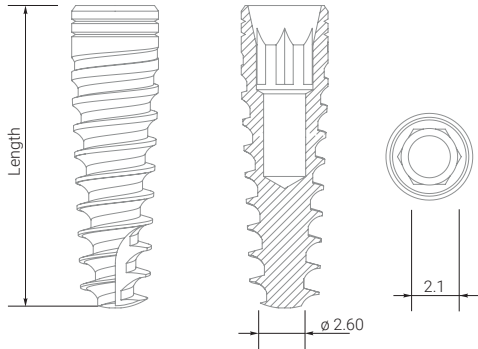
GEOMETRY



BIO3 IMPLANTS SURFACE



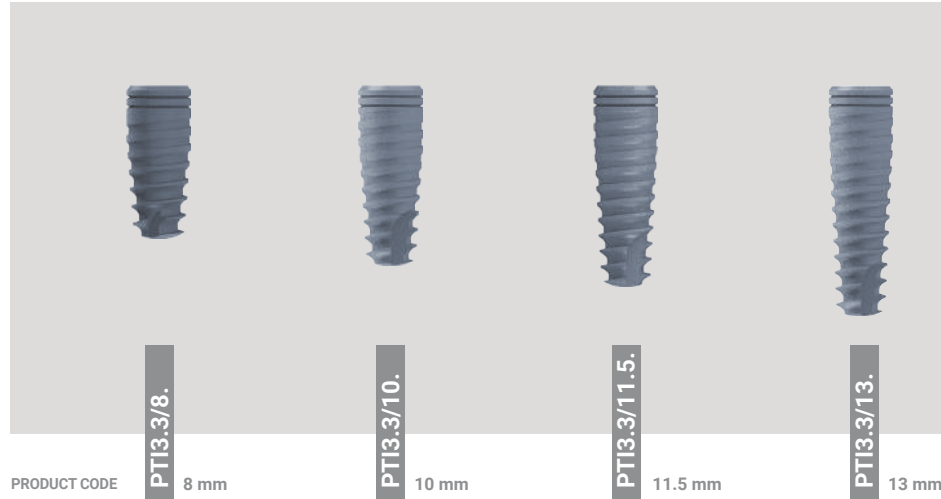
APICAL PART



ATTENTION!
It is used for installation in front parts (incisors)

Bio3 IMPLANT PROGRESSIVE

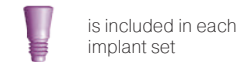
Standard platform



PRODUCT CODE **PT13.3/8.** 8 mm **PT13.3/10.** 10 mm **PT13.3/11.5.** 11.5 mm **PT13.3/13.** 13 mm

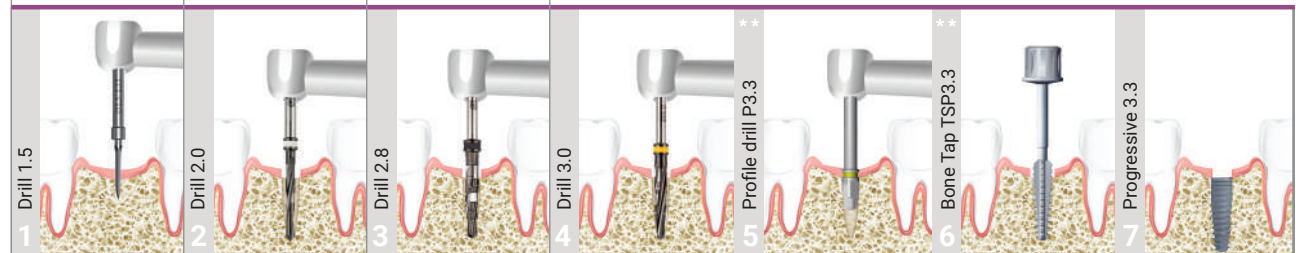
DIAMETER
3.3
INTERNAL HEX
2.1
STANDARD PLATFORM

TITANIUM COVER SCREW 2.1



RECOMMENDED DRILLING SPEED

D1	800-1200	D1	800-1000	D1	600-800	D1	500-700
D2	800-1200	D2	800-1000	D2	600-800	D2	600-800
D3	800-1000	D3	700-900	D3	500-600	D3	500-600
D4	800-1000	D4	600-800	D4	400-500	D4	400-500

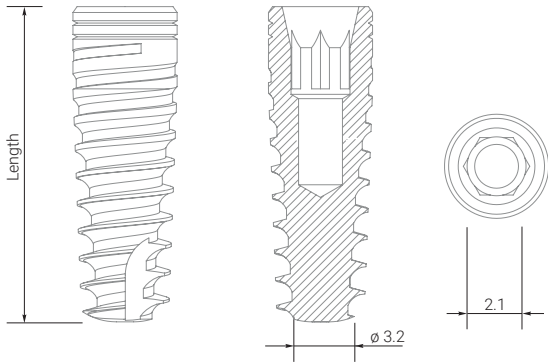


Implantation Protocol.*

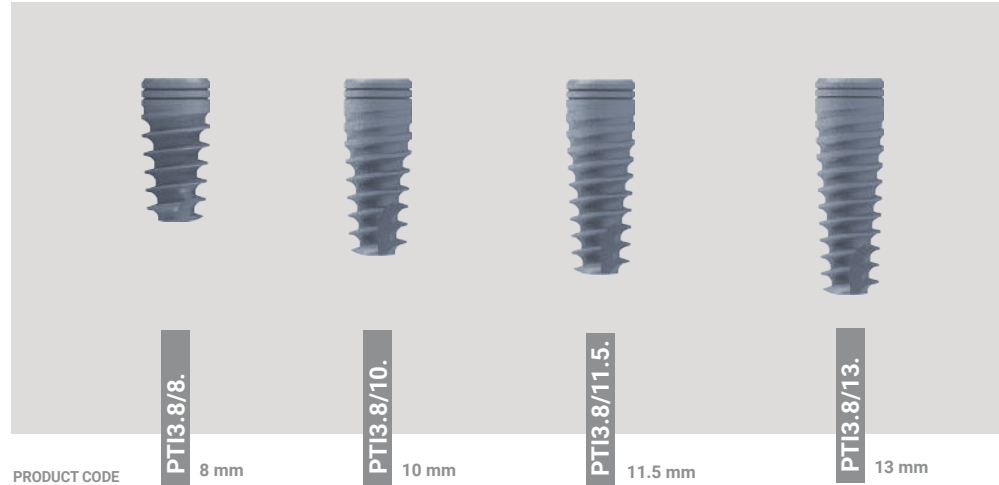
* The Protocol does not replace an appropriate training.
** It is used in I and II bone types.

Bio3 IMPLANT PROGRESSIVE

Standard platform



ATTENTION!
It is used for installation in front parts (incisors)



DIAMETER
3.8

INTERNAL HEX
2.1

STANDARD PLATFORM

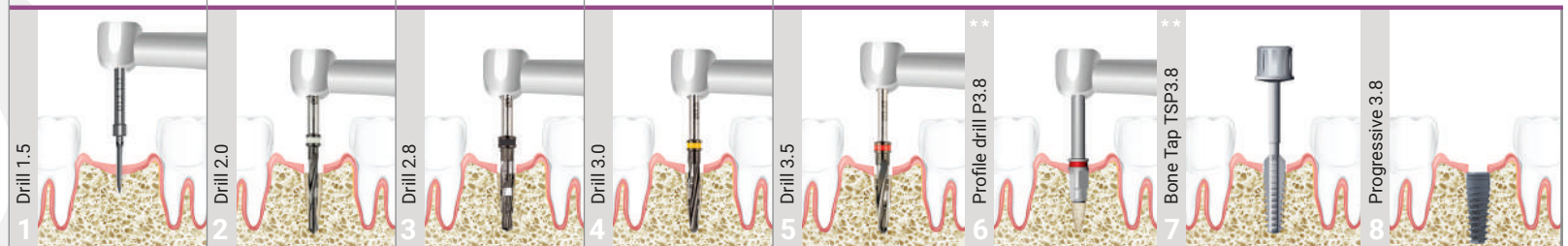
TITANIUM COVER SCREW 2.1



is included in each implant set

RECOMMENDED DRILLING SPEED

D1	800-1200	D1	800-1000	D1	600-800	D1	500-700	D1	500-700
D2	800-1200	D2	800-1000	D2	600-800	D2	600-800	D2	600-800
D3	800-1000	D3	700-900	D3	500-600	D3	500-600	D3	500-600
D4	800-1000	D4	600-800	D4	400-500	D4	400-500	D4	400-500

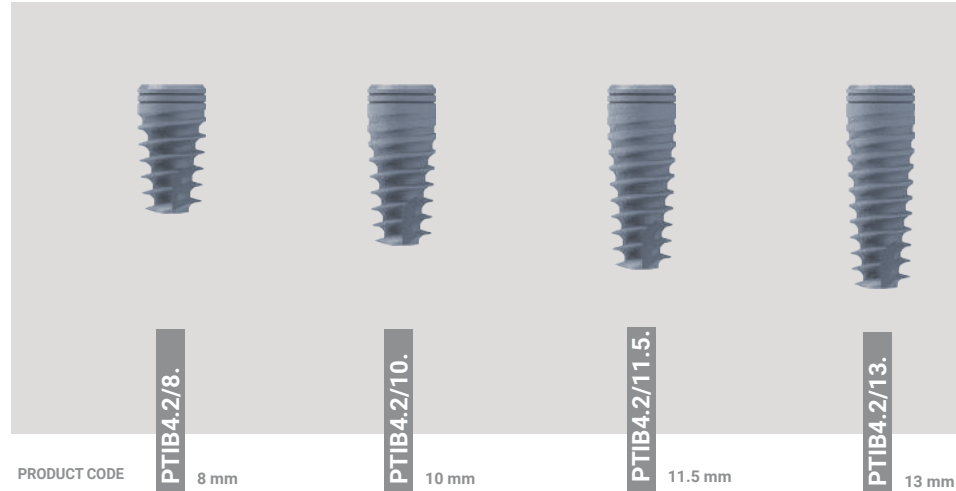
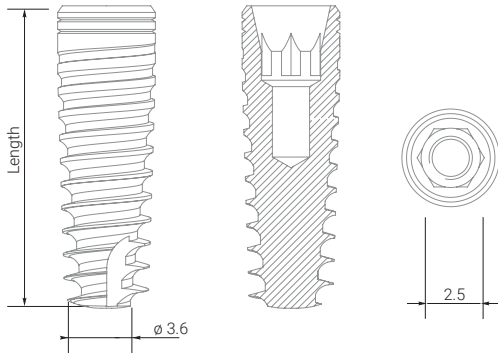


Implantation Protocol.*

* The Protocol does not replace an appropriate training.
** It is used in I and II bone types.

Bio3 IMPLANT PROGRESSIVE

Wide platform



DIAMETER
4.2

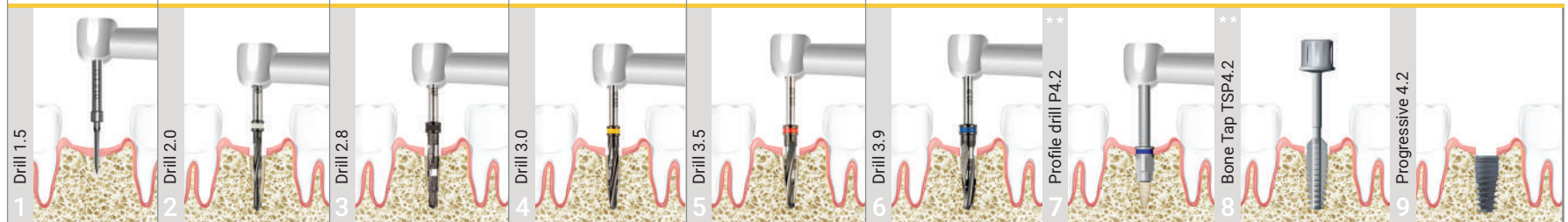
INTERNAL HEX
2.5

WIDE PLATFORM

TITANIUM COVER SCREW 2.5
is included in each implant set

RECOMMENDED DRILLING SPEED

D1 800-1200	D1 800-1000	D1 600-800	D1 500-700	D1 500-700	D1 400-600
D2 800-1200	D2 800-1000	D2 600-800	D2 600-800	D2 600-800	D2 500-700
D3 800-1000	D3 700-900	D3 500-600	D3 500-600	D3 500-600	D3 500-600
D4 800-1000	D4 600-800	D4 400-500	D4 400-500	D4 400-500	D4 400-500

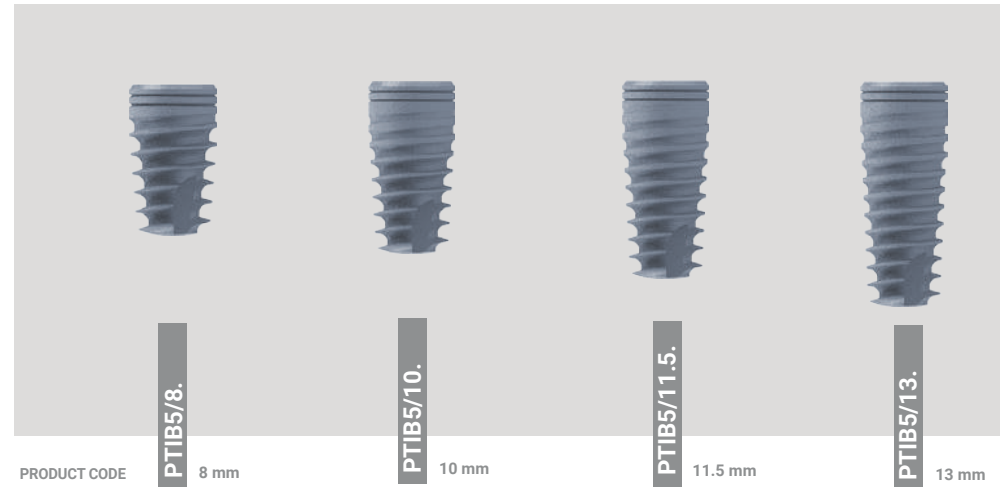
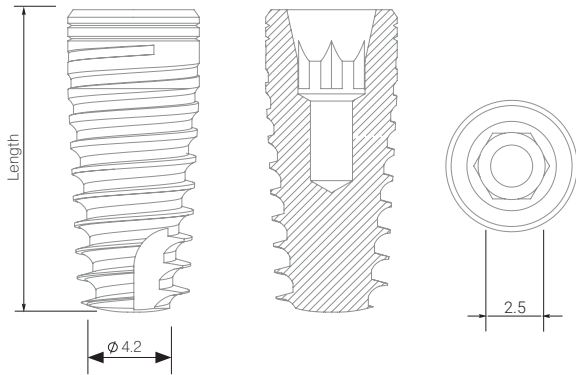


Implantation Protocol.*

* The Protocol does not replace an appropriate training.
** It is used in I and II bone types.

Bio3 IMPLANT PROGRESSIVE

Wide platform



DIAMETER
5.0
INTERNAL HEX
2.5

**WIDE
PLATFORM**

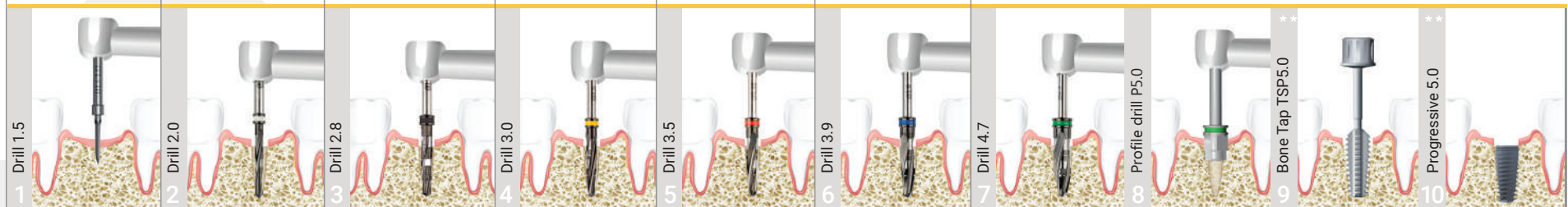
TITANIUM COVER SCREW 2.5



is included in each implant set

RECOMMENDED DRILLING SPEED

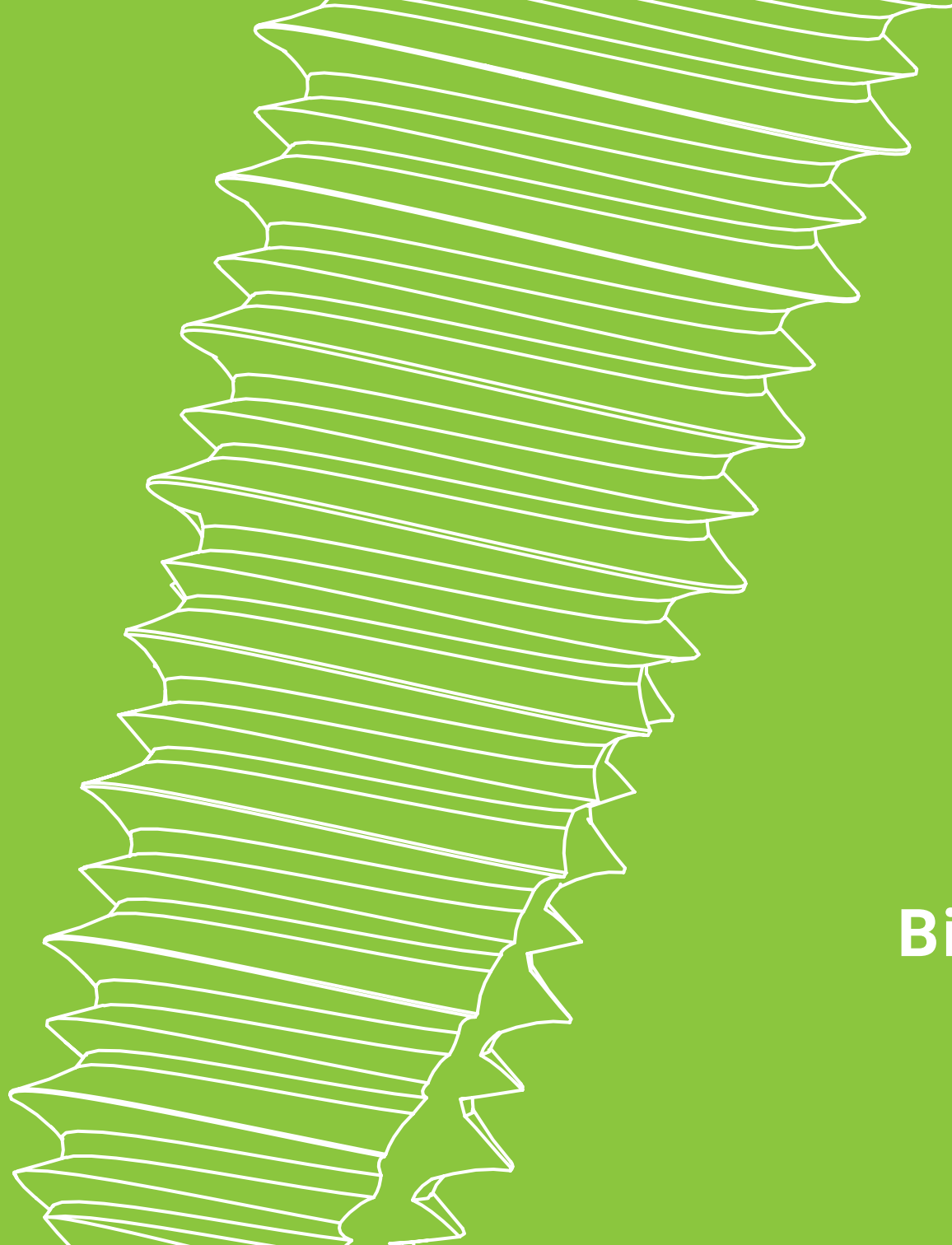
D1	800-1200	D1	800-1000	D1	600-800	D1	500-700	D1	500-700	D1	400-600	D1	400-600
D2	800-1200	D2	800-1000	D2	600-800	D2	600-800	D2	600-800	D2	500-700	D2	400-700
D3	800-1000	D3	700-900	D3	500-600	D3	500-600	D3	500-600	D3	500-600	D3	500-600
D4	800-1000	D4	600-800	D4	400-500	D4	400-500	D4	400-500	D4	400-500	D4	400-500



Implantation Protocol.*

* The Protocol does not replace an appropriate training.

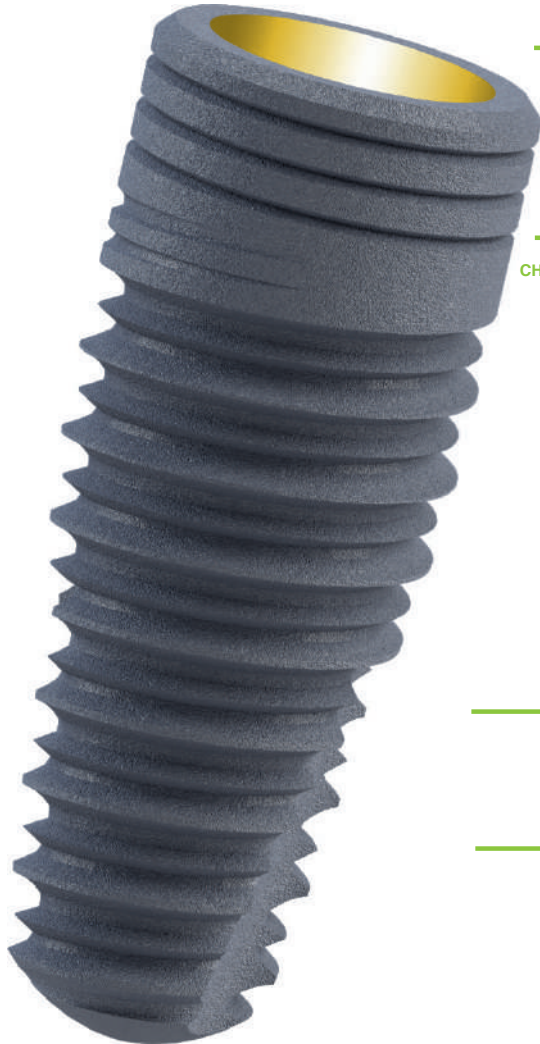
** It is used in I and II bone types.



**Bio3 IMPLANT
ADVANCED**

Bio3 IMPLANT ADVANCED

Tapered dental implants range



CONICAL CONNECTION & INTERNAL HEX

Conical connection with inner hex provides precise implant-abutment contact and results in excellent compression reduction in a cervical part of the implant.

CHARACTERISTICS

Spiral-shaped and self-tapping implant with classical triangle thread of two recurrent lengths. It was developed for a better primary stability and is applicable for various bone types.

Conical implant body perfectly complies with the drill shape for more precise bone fitting. Non-invasive apical implant part prevents from anatomical damage during sinus lifting procedure.

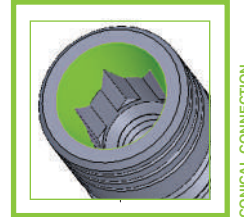
2 Platforms:
Standard: D3.3 mm, D3.8 mm
Wide: D4.2 mm, D5.0 mm
Platform switching
Internal Hexagon

SURFACE

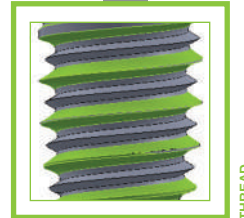
The surface of Bio3 implants is achieved by sandblasting and acid etching according to the latest quality norms and regulations.

APICAL PART

Precise design of implant apical part prevents from bone structure damage and gives an opportunity to decrease the time of surgical treatment.



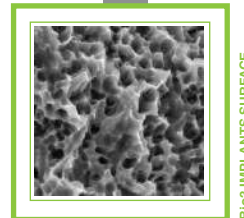
CONICAL CONNECTION



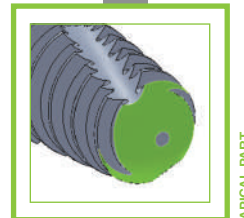
THREAD



GEOMETRY



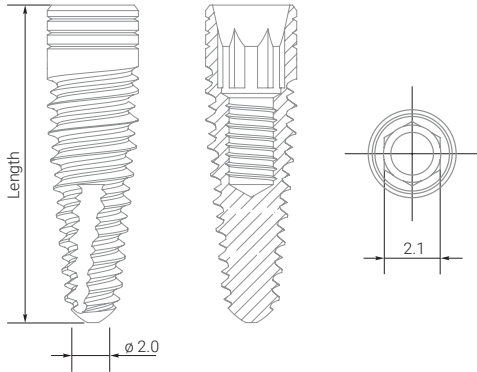
BIO3 IMPLANTS SURFACE



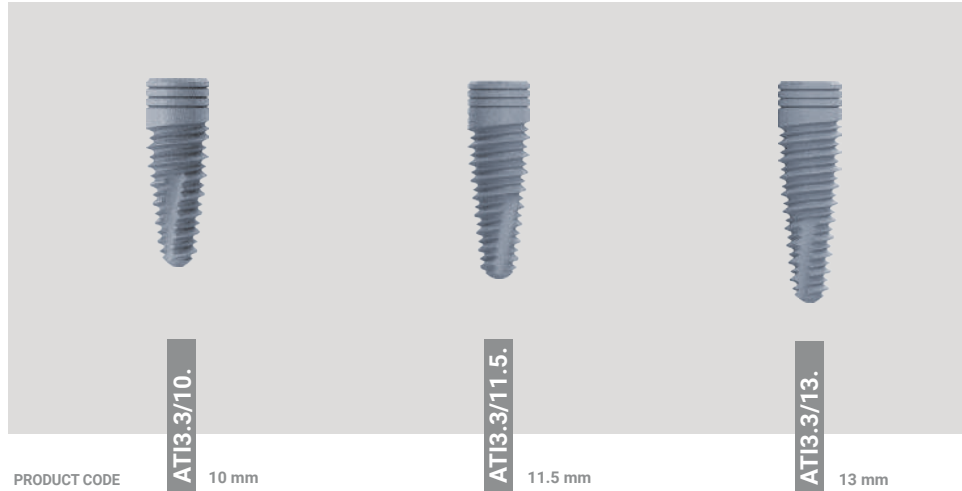
APICAL PART

Bio3 IMPLANT ADVANCED

Standard platform



ATTENTION!
It is used for installation in front parts (incisors)



PRODUCT CODE **AT13.3/10.** 10 mm

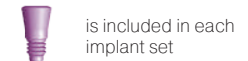
AT13.3/11.5. 11.5 mm

AT13.3/13. 13 mm

DIAMETER
3.3
INTERNAL HEX
2.1

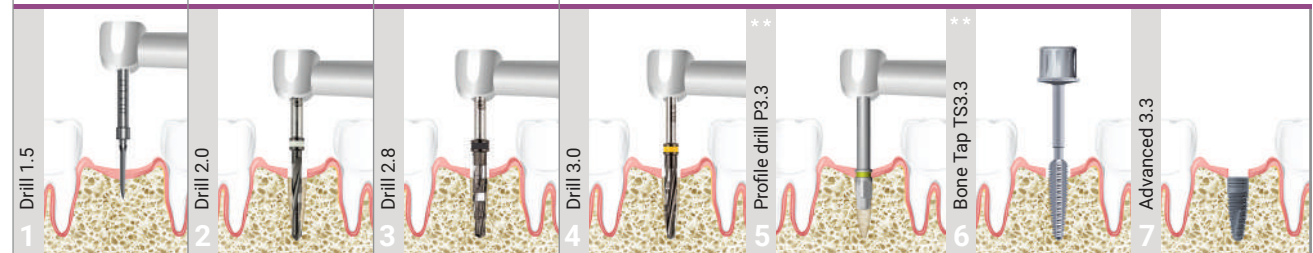
STANDARD PLATFORM

TITANIUM COVER SCREW 2.1



RECOMMENDED DRILLING SPEED

D1	800-1200	D1	800-1000	D1	600-800	D1	500-700
D2	800-1200	D2	800-1000	D2	600-800	D2	600-800
D3	800-1000	D3	700-900	D3	500-600	D3	500-600
D4	800-1000	D4	600-800	D4	400-500	D4	400-500



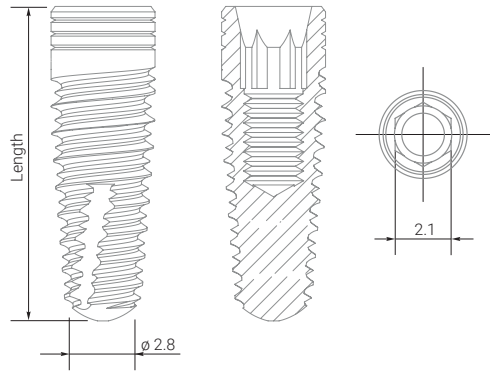
Implantation Protocol.*

* The Protocol does not replace an appropriate training.

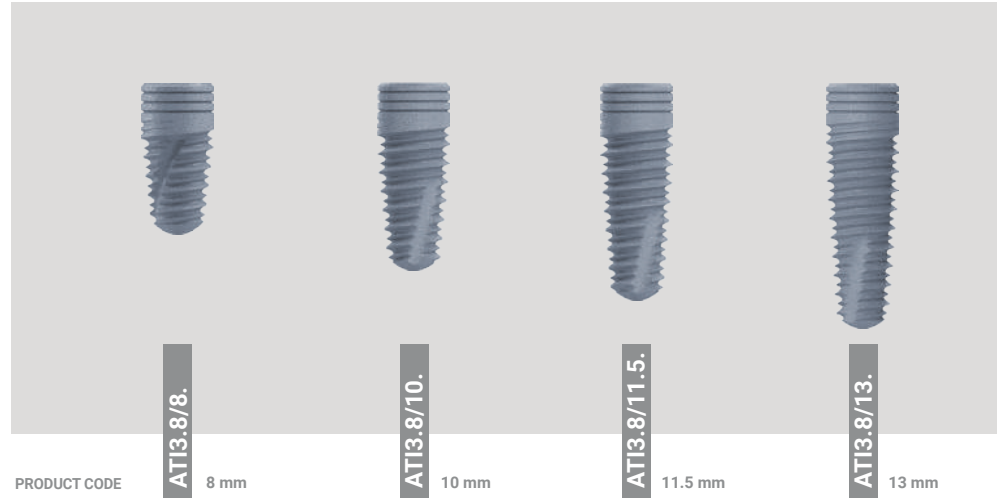
** It is used in I and II bone types.

Bio3 IMPLANT ADVANCED

Standard platform



ATTENTION!
It is used for installation in front parts (incisors)



DIAMETER
3.8

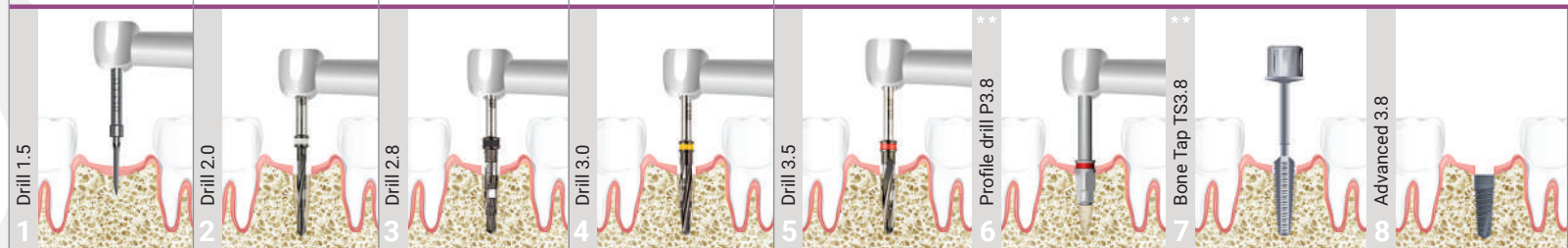
INTERNAL HEX
2.1

STANDARD PLATFORM

TITANIUM COVER SCREW 2.1
 is included in each implant set

RECOMMENDED DRILLING SPEED

D1	800-1200	D1	800-1000	D1	600-800	D1	500-700	D1	500-700
D2	800-1200	D2	800-1000	D2	600-800	D2	600-800	D2	600-800
D3	800-1000	D3	700-900	D3	500-600	D3	500-600	D3	500-600
D4	800-1000	D4	600-800	D4	400-500	D4	400-500	D4	400-500

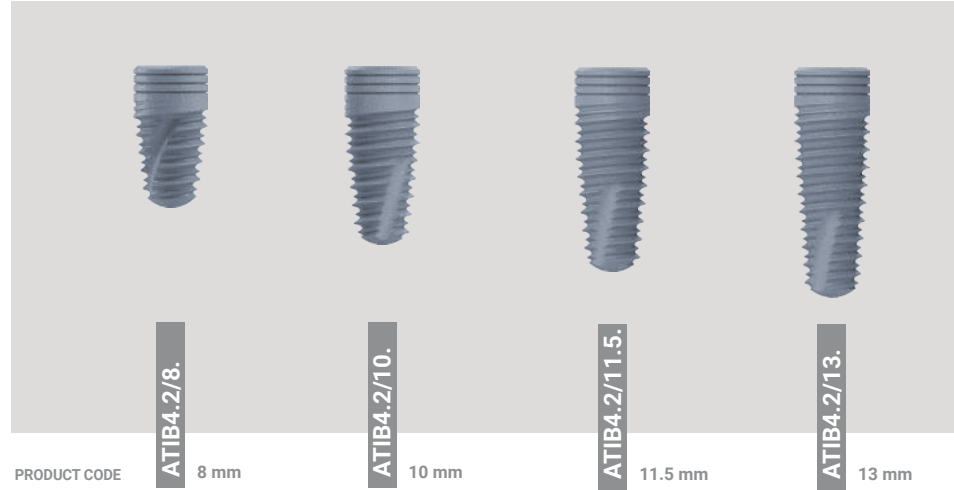
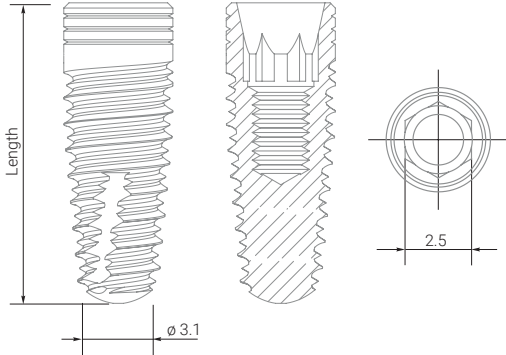


Implantation Protocol.*

* The Protocol does not replace an appropriate training.
** It is used in I and II bone types.

Bio3 IMPLANT ADVANCED

Wide platform



PRODUCT CODE ATIB4.2/8. 8 mm ATIB4.2/10. 10 mm ATIB4.2/11.5. 11.5 mm ATIB4.2/13. 13 mm

WIDE PLATFORM

DIAMETER **4.2**
INTERNAL HEX **2.5**

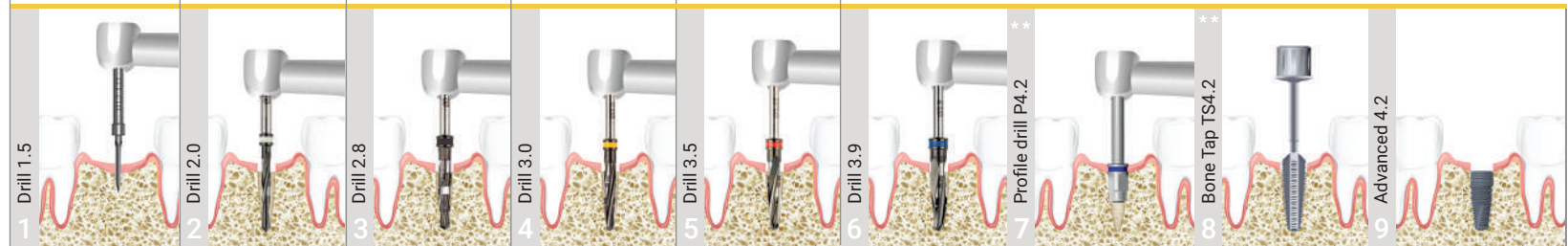
TITANIUM COVER SCREW 2.5



is included in each implant set

RECOMMENDED DRILLING SPEED

D1 800-1200	D1 800-1000	D1 600-800	D1 500-700	D1 500-700	D1 400-600
D2 800-1200	D2 800-1000	D2 600-800	D2 600-800	D2 600-800	D2 500-700
D3 800-1000	D3 700-900	D3 500-600	D3 500-600	D3 500-600	D3 500-600
D4 800-1000	D4 600-800	D4 400-500	D4 400-500	D4 400-500	D4 400-500



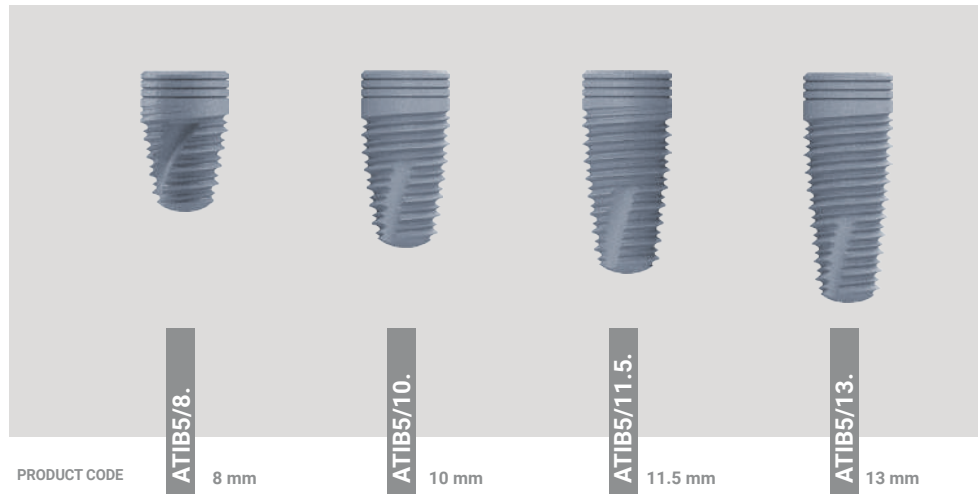
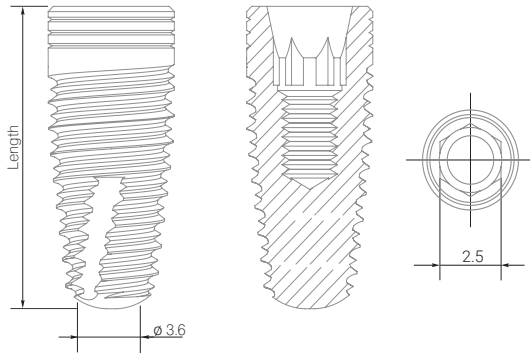
Implantation Protocol.*

* The Protocol does not replace an appropriate training.

** It is used in I and II bone types.

Bio3 IMPLANT ADVANCED

Wide platform



PRODUCT CODE **ATIB5/8.** 8 mm **ATIB5/10.** 10 mm **ATIB5/11.5.** 11.5 mm **ATIB5/13.** 13 mm

DIAMETER
5.0
INTERNAL HEX
2.5

**WIDE
PLATFORM**

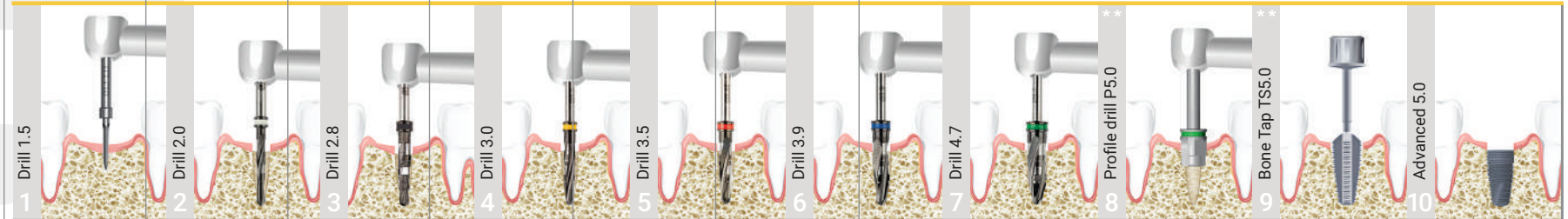
TITANIUM COVER SCREW 2.5



is included in each implant set

RECOMMENDED DRILLING SPEED

D1 800-1200	D1 800-1000	D1 600-800	D1 500-700	D1 500-700	D1 400-600	D1 400-600
D2 800-1200	D2 800-1000	D2 600-800	D2 600-800	D2 600-800	D2 500-700	D2 400-700
D3 800-1000	D3 700-900	D3 500-600	D3 500-600	D3 500-600	D3 500-600	D3 500-600
D4 800-1000	D4 600-800	D4 400-500	D4 400-500	D4 400-500	D4 400-500	D4 400-500

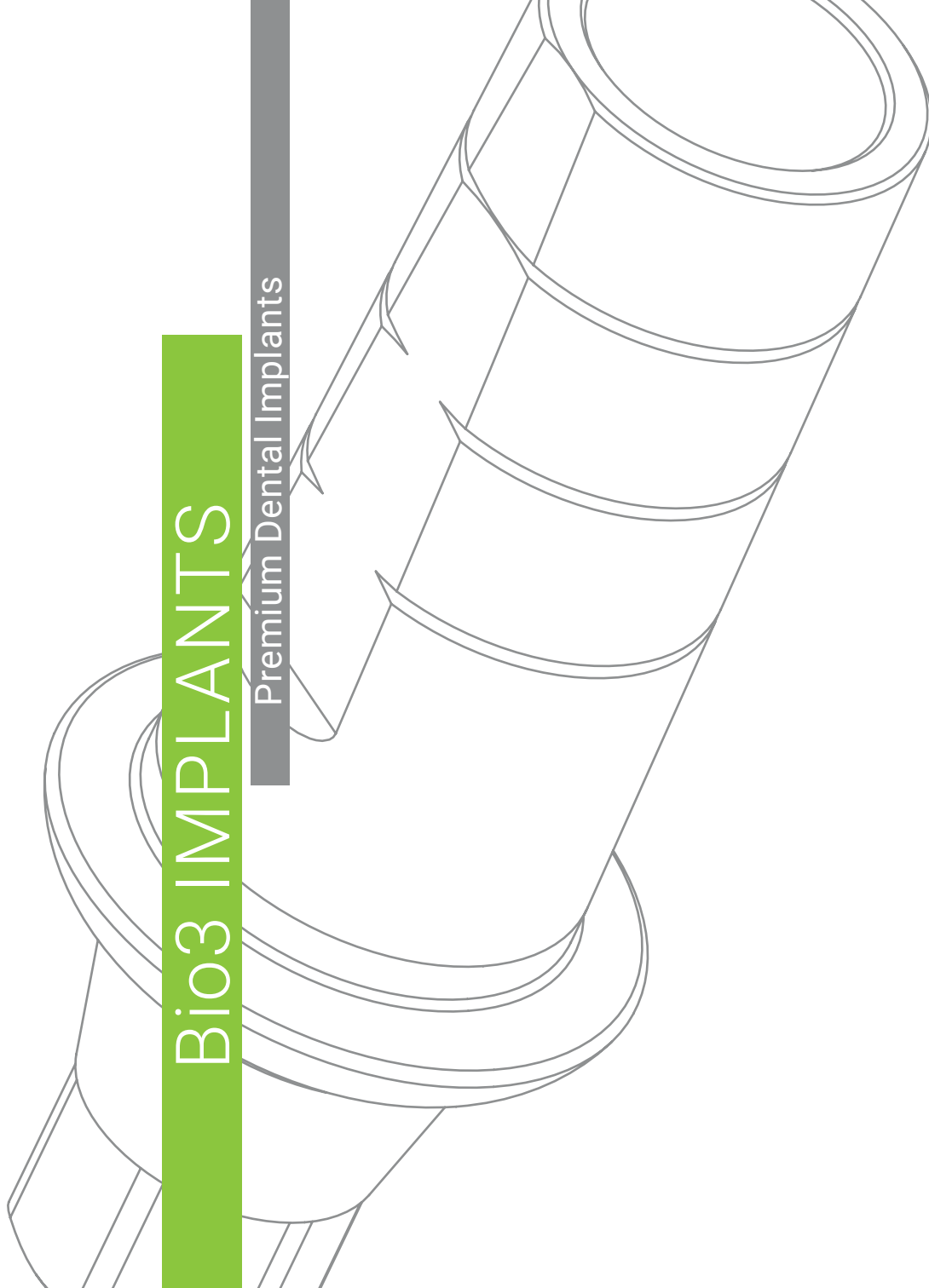


Implantation Protocol.*

* The Protocol does not replace an appropriate training.
** It is used in I and II bone types.

Bio3 IMPLANTS

Premium Dental Implants

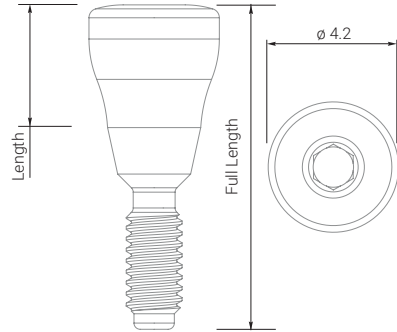


SUPRASTRUCTURES

GINGIVA HEALING ABUTMENTS

Standard platform

INTERNAL HEX
2.1



PRODUCT CODE

HEALING CAPS

MATERIAL Titanium Grade 5

Healing cap for standard platform (2.1 mm) with two diameters – 4.2 mm and 5,5 mm. It is installed using universal or hand prosthetic insertion driver.

STANDARD



GFS2



GFS3



GFS4



GFS5



GFS7

DIAMETER	4.2 mm	4.2 mm	4.2 mm	4.2 mm	4.2 mm
LENGTH	2 mm	3 mm	4 mm	5 mm	7 mm
FULL LENGTH	8.45 mm	9.45 mm	10.45 mm	11.45 mm	13.45 mm

WIDE



GFS/W2



GFS/W3

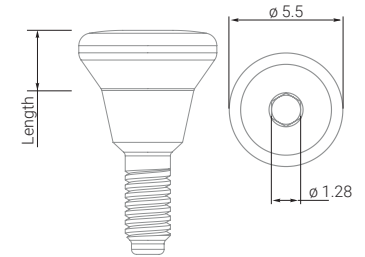


GFS/W4



GFS/W5

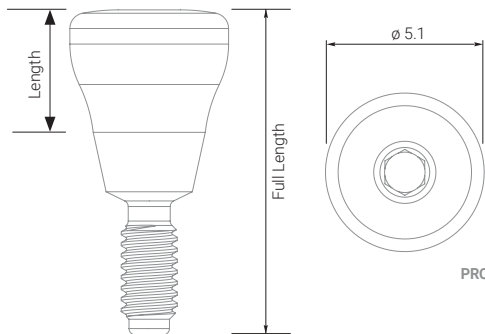
DIAMETER	5.5 mm	5.5 mm	5.5 mm	5.5 mm
LENGTH	2 mm	3 mm	4 mm	5 mm
FULL LENGTH	7.72 mm	8.73 mm	9.73 mm	10.73 mm



GINGIVA HEALING ABUTMENTS

Wide platform

INTERNAL HEX
2.5



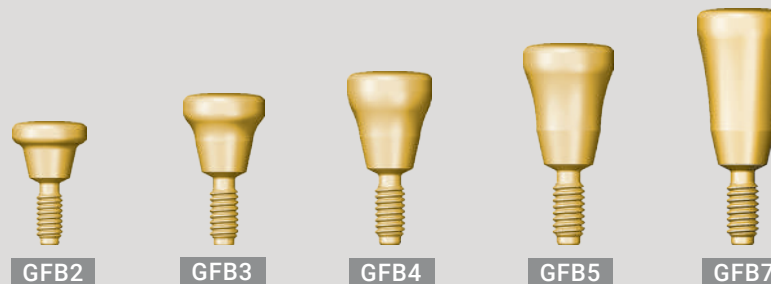
PRODUCT CODE

HEALING CAPS

MATERIAL Titanium Grade 5

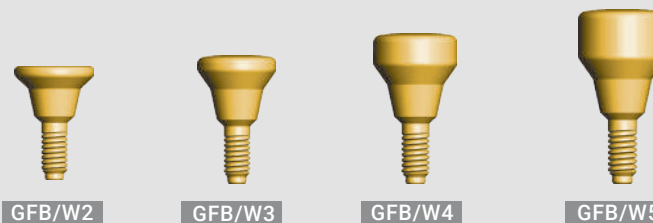
Healing cap for wide platform (2.5 mm) with two diameters – 5.1 mm and 5.5 mm. It is installed using universal or hand prosthetic insertion driver.

STANDARD



PRODUCT CODE	GFB2	GFB3	GFB4	GFB5	GFB7
DIAMETER	5.1 mm	5.1 mm	5.1 mm	5.1 mm	5.1 mm
LENGTH	2 mm	3 mm	4 mm	5 mm	7 mm
FULL LENGTH	8.45 mm	9.45 mm	10.45 mm	11.45 mm	13.45 mm

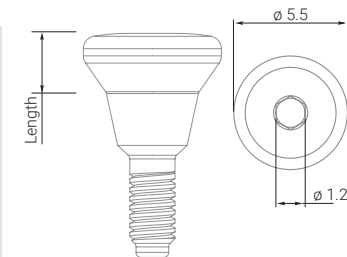
WIDE



PRODUCT CODE

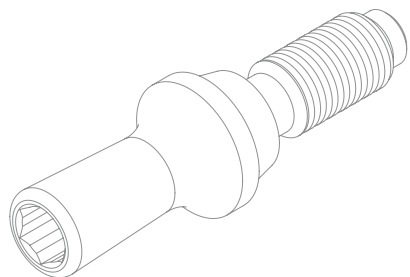
PRODUCT CODE	GFB/W2	GFB/W3	GFB/W4	GFB/W5
DIAMETER	5.5 mm	5.5 mm	5.5 mm	5.5 mm
LENGTH	2 mm	3 mm	4 mm	5 mm
FULL LENGTH	7.9 mm	8.9 mm	9.9 mm	10.9 mm

MATERIAL Titanium Grade 5



GINGIVA HEALING NARROW ABUTMENTS

Standard platform



MATERIAL Titanium Grade 5

DIAMETER

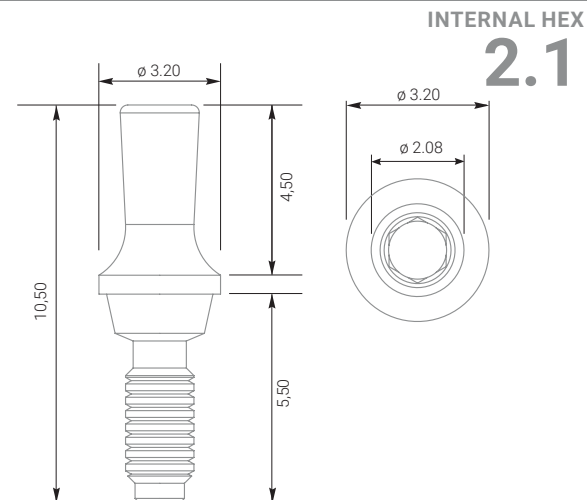
3.2 mm

LENGTH

10.5 mm



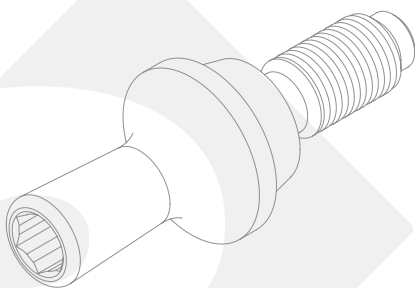
PRODUCT CODE GFNS



Wide platform

Ensures ideal gingival margin.

Suitable for any variants of the following dental prosthetics.



MATERIAL Titanium Grade 5

DIAMETER

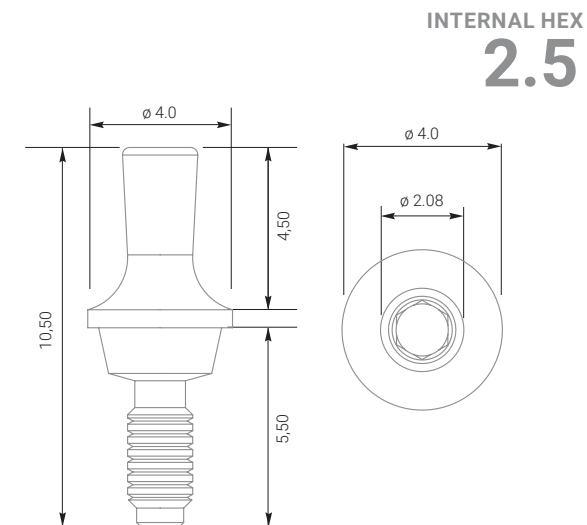
4.0 mm

LENGTH

10.5 mm

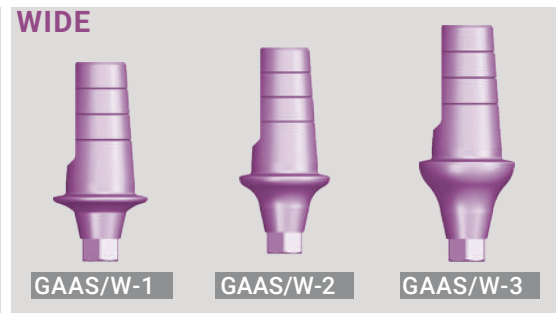
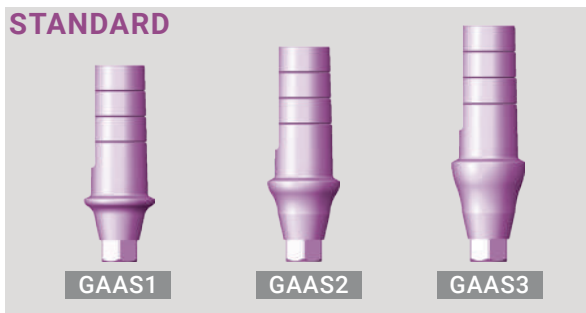
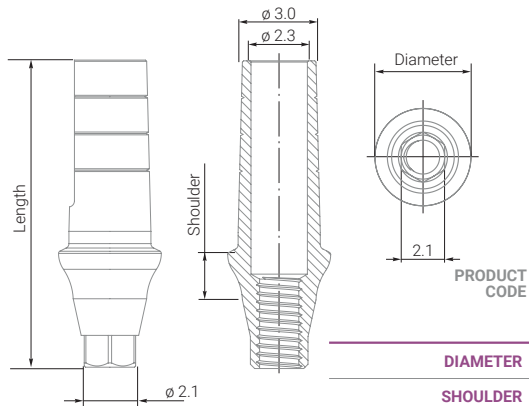


PRODUCT CODE GFNB



STRAIGHT ANATOMIC ABUTMENTS

Standard platform



INTERNAL HEX
2.1

Each abutment set includes:



PROSTHETIC SCREW

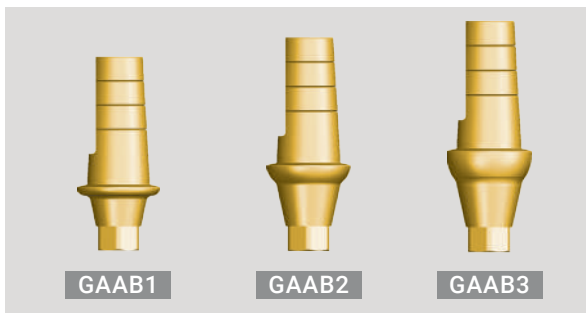
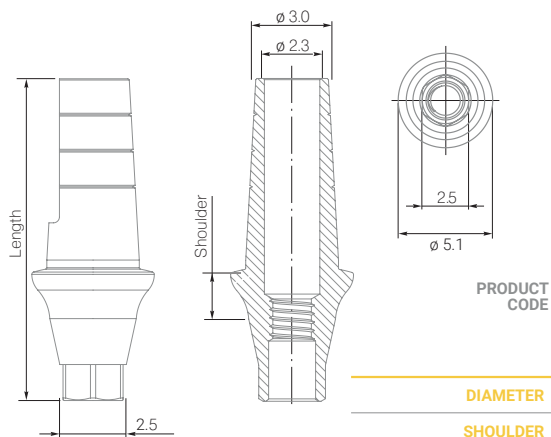
DIAMETER	4.2 mm	4.2 mm	4.2 mm
SHOULDER	1 mm	2 mm	3 mm
LENGTH	11.55 mm	12.55 mm	13.55 mm

DIAMETER	5.5 mm	5.5 mm	5.5 mm
SHOULDER	1 mm	2 mm	3 mm
LENGTH	11.55 mm	12.55 mm	13.55 mm

Anatomic titanium abutment for standard platform (2.1 mm) with 1. 2. 3 mm shoulders that has two shoulder diameter widths – 4.2 mm and 5.5 mm. It is installed using universal or hand prosthetic insertion driver.

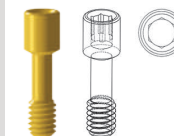
MATERIAL Titanium Grade 5

Wide platform



INTERNAL HEX
2.5

Each abutment set includes:



PROSTHETIC SCREW

DIAMETER	5.1 mm	5.1 mm	5.1 mm
SHOULDER	1 mm	2 mm	3 mm
LENGTH	12.4 mm	13.4 mm	14.4 mm

MATERIAL Titanium Grade 5

PLASTIC TRANSFER-CAP

STANDARD PLATFORM

WIDE PLATFORM



PRODUCT CODE

PTCS

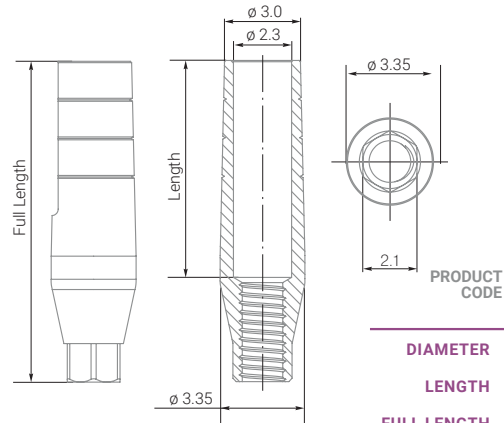
PTCB

DIAMETER	7.0 mm	8.0 mm
LENGTH	10 mm	10 mm

Anatomic titanium abutment for wide platform (2.5 mm) with 1. 2. 3 mm shoulders. It is installed using universal or hand prosthetic insertion driver.

STRAIGHT ABUTMENTS

Standard platform



MATERIAL Titanium Grade 5

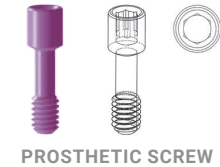


	WIDE	STANDARD		
DIAMETER	5.0 mm	3.35 mm	3.35 mm	3.35 mm
LENGTH	9 mm	6.7 mm	8.7 mm	11.7 mm
FULL LENGTH	13.7 mm	10.55 mm	12.55 mm	15.55 mm

Titanium straight abutment for standard platform (2.1 mm). It is installed using universal or hand prosthetic insertion driver.

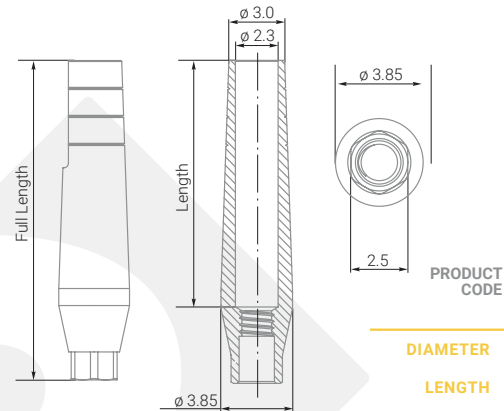
INTERNAL HEX
2.1

Each abutment set includes:



PROSTHETIC SCREW

Wide platform



MATERIAL Titanium Grade 5

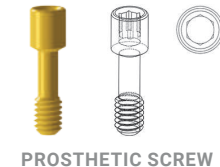


	WIDE	STANDARD		
DIAMETER	5.5 mm	3.85 mm	3.85 mm	3.85 mm
LENGTH	9 mm	8.07 mm	10.07 mm	13.07 mm
FULL LENGTH	13.9 mm	12.12 mm	14.12 mm	17.12 mm

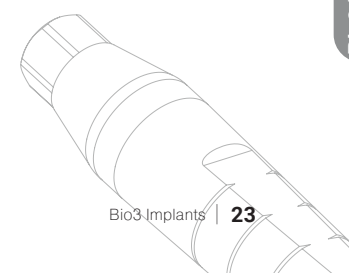
Titanium straight abutment for wide platform (2.5 mm). It is installed using universal or hand prosthetic insertion driver.

INTERNAL HEX
2.5

Each abutment set includes:

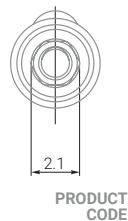
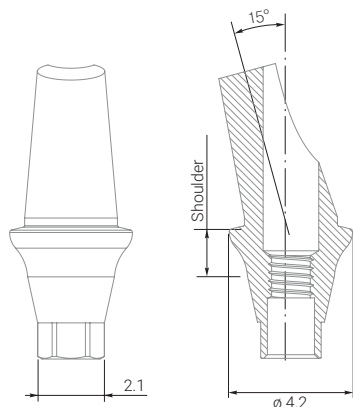


PROSTHETIC SCREW



ANGLED ABUTMENTS 15°

Standard platform

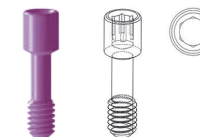


	EAAS15	EAAS1501	EAAS1502	EAAS1503
DIAMETER	3.35 mm	4.2 mm	4.2 mm	4.2 mm
SHOULDER		1 mm	2 mm	3 mm
LENGTH	11.0 mm	10.85 mm	11.85 mm	12.85 mm
ANGLE	15°	15°	15°	15°

MATERIAL Titanium Grade 5

Angled anatomic titanium abutment 15° for standard platform (2.1 mm) with 1. 2. 3 mm shoulder or without it. It is installed using universal or hand prosthetic insertion driver.

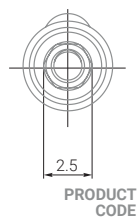
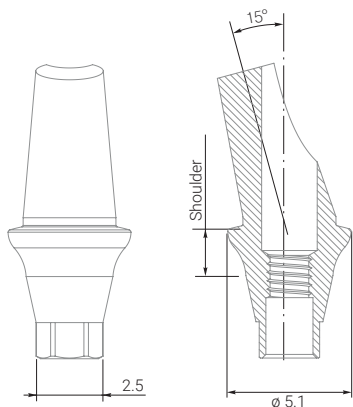
Each abutment set includes:



PROSTHETIC SCREW

INTERNAL HEX
2.1

Wide platform

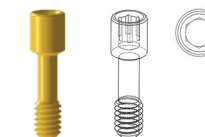


	EAAB15	EAAB1501	EAAB1502	EAAB1503
DIAMETER	3.85 mm	5.1 mm	5.1 mm	5.1 mm
SHOULDER		1 mm	2 mm	3 mm
LENGTH	12.85 mm	11.55 mm	12.2 mm	13.2 mm
ANGLE	15°	15°	15°	15°

MATERIAL Titanium Grade 5

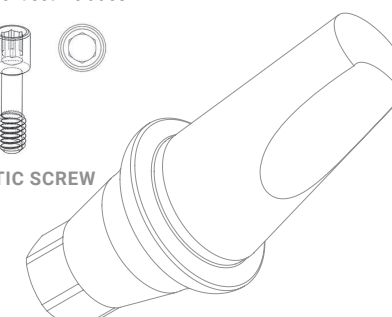
Angled anatomic titanium abutment 15° for wide platform (2.5 mm) with 1. 2. 3 mm shoulder or without it. It is installed using universal or hand prosthetic insertion driver.

Each abutment set includes:



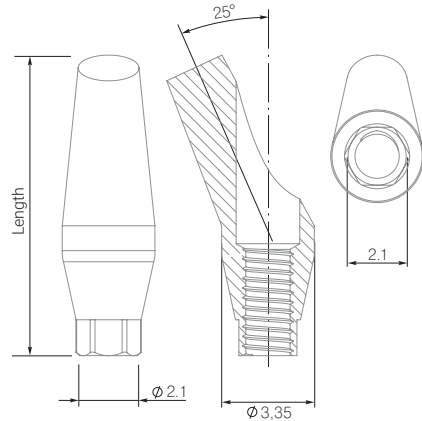
PROSTHETIC SCREW

INTERNAL HEX
2.5

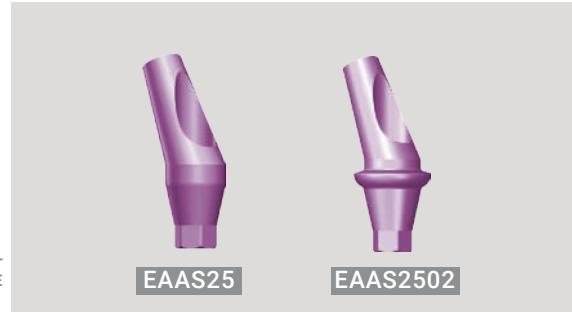


ANGLED ABUTMENTS 25°

Standard platform

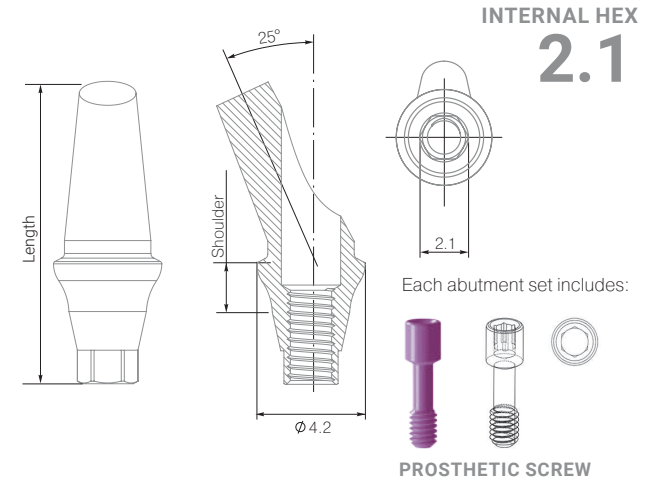


MATERIAL Titanium Grade 5

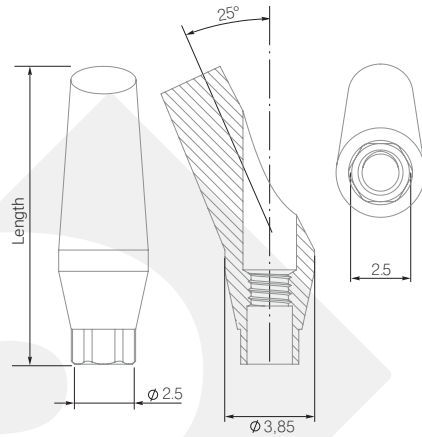


PRODUCT CODE	EAAS25	EAAS2502
DIAMETER	3.35 mm	4.2 mm
SHOULDER		2 mm
LENGTH	10.9 mm	11.75 mm
ANGLE	25°	25°

Angled anatomic titanium abutment 25° for standard platform (2.1 mm) with 2 mm shoulder or without it. It is installed using universal or hand prosthetic insertion driver.



Wide platform

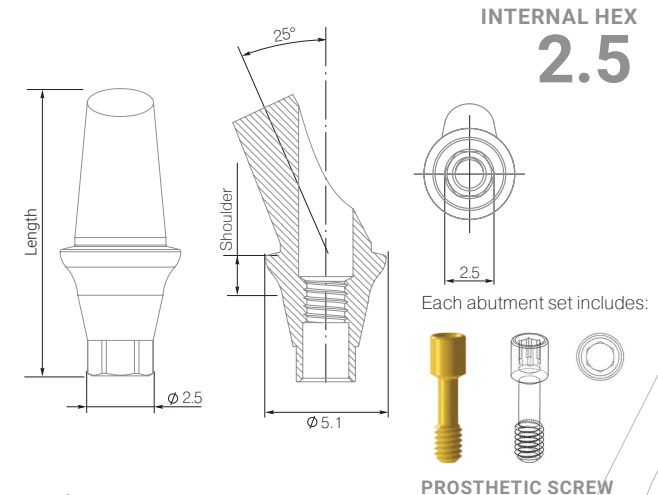


MATERIAL Titanium Grade 5



PRODUCT CODE	EAAB25	EAAB2502
DIAMETER	3.85 mm	5.1 mm
SHOULDER		2 mm
LENGTH	12.8 mm	12.15 mm
ANGLE	25°	25°

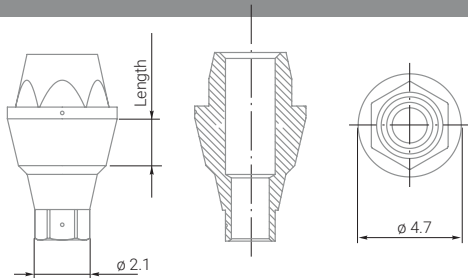
Angled anatomic titanium abutment 25° for wide platform (2.5 mm) with 2 mm shoulder or without it. It is installed using universal or hand prosthetic insertion driver.



MULTI-UNITS FOR SINGLE CONSTRUCTION

*Antirotational Aesthetic Abutment S/W

Standard platform



PRODUCT CODE

VAAS1

VAAS2

VAAS3

DIAMETER	4.7 mm	4.7 mm	4.7 mm
LENGTH	1 mm	2 mm	3 mm

MATERIAL Titanium Grade 5

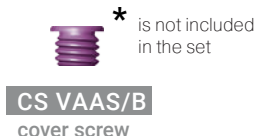
The abutment is used to renew a single construction. Screw in with a maximum force of 20 newton.

Each abutment set includes:



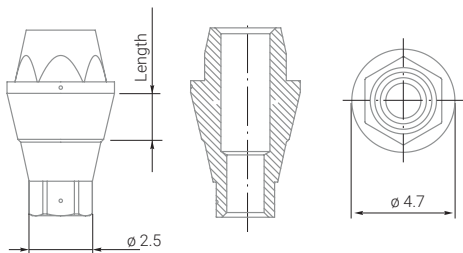
PROSTHETIC SCREW

INTERNAL HEX
2.1



CS VAAS/B
cover screw

Wide platform



PRODUCT CODE

VAAB1

VAAB2

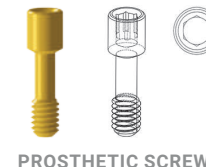
VAAB3

DIAMETER	4.7 mm	4.7 mm	4.7 mm
LENGTH	1 mm	2 mm	3 mm

MATERIAL Titanium Grade 5

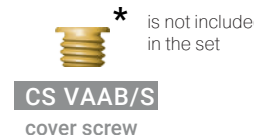
The abutment is used to renew a single construction. Screw in with a maximum force of 20 newton.

Each abutment set includes:



PROSTHETIC SCREW

INTERNAL HEX
2.5



CS VAAB/S
cover screw

Titanium sleeve for screw retained abutment



GAVAA

Healing Cap

for screw retained abutment



GAES2

Burnout plastic sleeve

for screw retained abutment



Plastic VAAS
Plastic VAAS
NON HEX

Temporary PEEK sleeve

for screw retained abutment



TGAS1

Laboratory Analog

for screw retained abutment



IAES

Transfer

for screw retained abutment



SAES15

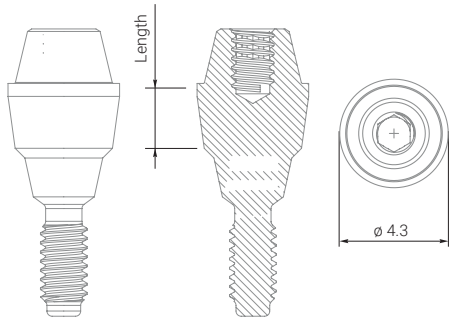
* Screw SSA is included

MULTI-UNITS FOR FIXED BRIDGE

*Antirotational Aesthetic Abutment S+/W+

Standard platform

INTERNAL HEX
2.1



MATERIAL Titanium Grade 5



PRODUCT CODE	VAAS1+	VAAS2+	VAAS3+
DIAMETER	4.3 mm	4.3 mm	4.3 mm
LENGTH	1 mm	2 mm	3 mm

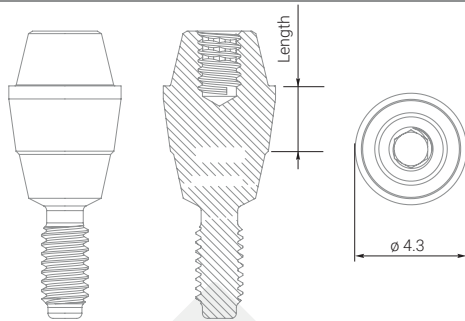


CS VAAS/B
cover screw

The abutment is used to restore a fixed bridge with screw retention. Screw in with a maximum force of 20 newton.

Wide platform

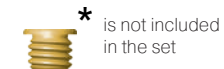
INTERNAL HEX
2.5



MATERIAL Titanium Grade 5



PRODUCT CODE	VAAB1+	VAAB2+	VAAB3+
DIAMETER	4.3 mm	4.3 mm	4.3 mm
LENGTH	1 mm	2 mm	3 mm



CS VAAB/S
cover screw

Titanium sleeve for screw retained abutment / angulated multi-unit



GIMV

Castable sleeve for screw retained abutment / angulated multi-unit



CSMU

Out-Burnt Plastic Cap

Healing Cap

for screw retained abutment / angulated multi-unit



GIMA

Healing Cap Wide

for screw retained abutment / angulated multi-unit



GIMA-W

Burnout plastic sleeve

for screw retained abutment / angulated multi-unit



Plastic TCMS

Temporary PEEK sleeve

for screw retained abutment / angulated multi-unit



TGMM 1

Laboratory Analog

for screw retained abutment / angulated multi-unit



IAEN

Transfer

for screw retained abutment / angulated multi-unit



SOKM15

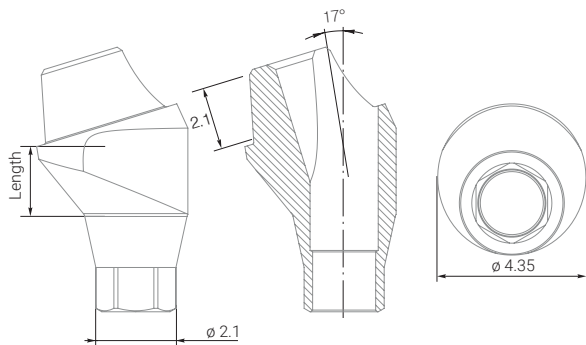
* Screw for **GIMA** is included

ANGLED MULTI-UNITS FOR FIXED BRIDGE 17°

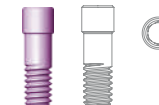
*Titanium basis for multi-unit S/W

Standard platform

INTERNAL HEX
2.1



Each multi-unit basis set includes:



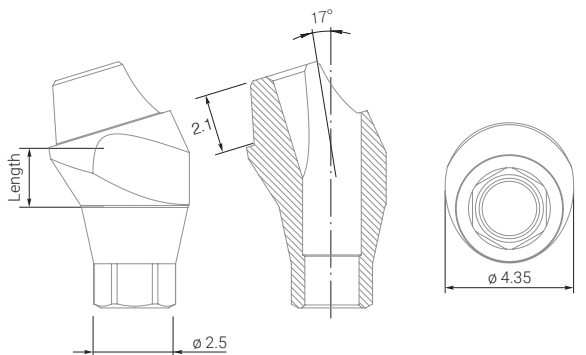
PROSTHETIC SCREW

PRODUCT CODE	TBMS1701	TBMS1702	TBMS1703
DIAMETER	4.35 mm	4.35 mm	4.35 mm
LENGTH	1 mm	2 mm	3 mm

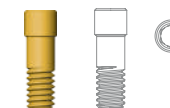
Angled multi-unit 17° of a standard/wide platform is intended for the construction with screw retention during the treatment of partial or full adentia. It is used in cases where the implant is placed at an angle. A multifunctional torque wrench is used for the installation.

Wide platform

INTERNAL HEX
2.5



Each multi-unit basis set includes:



PROSTHETIC SCREW

PRODUCT CODE	TBMB1701	TBMB1702	TBMB1703
DIAMETER	4.35 mm	4.35 mm	4.35 mm
LENGTH	1 mm	2 mm	3 mm

Titanium sleeve for screw retained abutment / angled multi-unit



GIMV

Castable sleeve for screw retained abutment / angled multi-unit



CSMU

Healing Cap

for screw retained abutment / angled multi-unit



GIMA

Healing Cap Wide

for screw retained abutment / angled multi-unit



GIMA-W

Burnout plastic sleeve

for screw retained abutment / angled multi-unit



Plastic TCMS

Temporary PEEK sleeve

for screw retained abutment / angled multi-unit



TGMN 1

Laboratory Analog

for screw retained abutment / angled multi-unit



IAEN

Transfer

for screw retained abutment / angled multi-unit



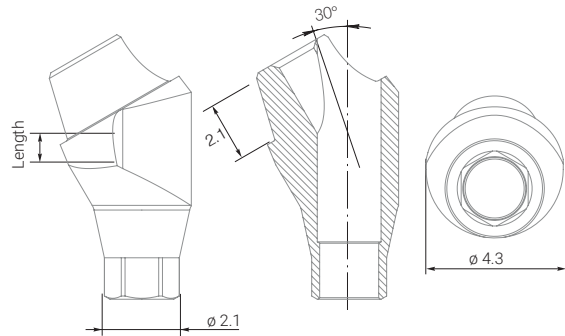
SOKM15

* Screw for GIMA is included

ANGLED MULTI-UNITS FOR FIXED BRIDGE 30°

*Titanium basis for multiunit S/W

Standard platform

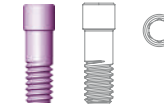


PRODUCT CODE	TBMS3001	TBMS3002	TBMS3003
DIAMETER	4.3 mm	4.3 mm	4.3 mm
LENGTH	1 mm	2 mm	3 mm

Angled multi-unit 30° of a standard/wide platform is intended for the construction with screw retention during the treatment of partial or full adentia. It is used in cases when the implant is placed at an angle. A multifunctional torque wrench is used for the installation.

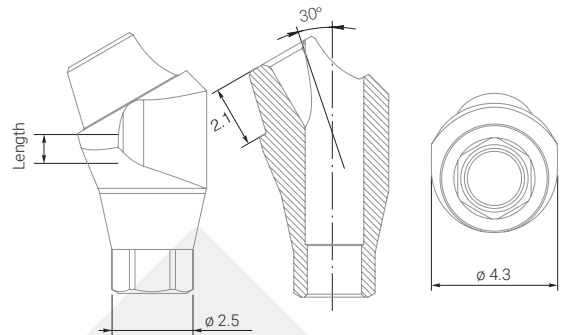
INTERNAL HEX
2.1

Each multi-unit basis set includes:



PROSTHETIC SCREW

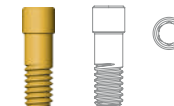
Wide platform



PRODUCT CODE	TBMB3001	TBMB3002	TBMB3003
DIAMETER	4.3 mm	4.3 mm	4.3 mm
LENGTH	1 mm	2 mm	3 mm

INTERNAL HEX
2.5

Each multi-unit basis set includes:



PROSTHETIC SCREW

<p>Titanium sleeve for screw retained abutment / angled multi-unit</p> <p>GIMV</p>	<p>Castable sleeve for screw retained abutment / angled multi-unit</p> <p>CSMU</p>	<p>Healing Cap for screw retained abutment / angled multi-unit</p> <p>GIMA</p>	<p>Healing Cap Wide for screw retained abutment / angled multi-unit</p> <p>GIMA-W</p>	<p>Burnout plastic sleeve for screw retained abutment / angled multi-unit</p> <p>Plastic TCMS</p>	<p>Temporary PEEK sleeve for screw retained abutment / angled multi-unit</p> <p>TGMN 1</p>	<p>Laboratory Analog for screw retained abutment / angled multi-unit</p> <p>IAEN</p>	<p>Transfer for screw retained abutment / angled multi-unit</p> <p>SOKM15</p>
--	--	--	---	---	--	--	---

* Screw for GIMA is included

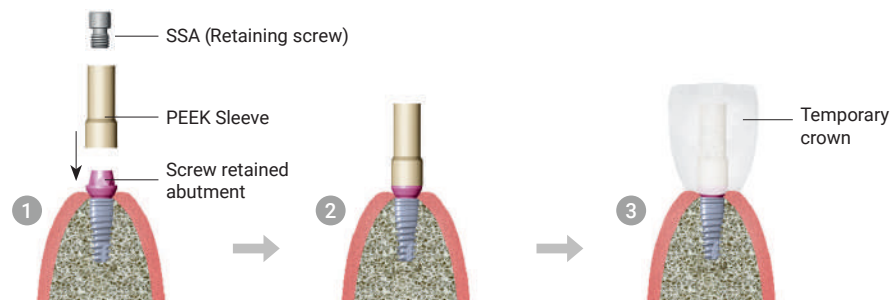
MANUAL I. SINGLE CONSTRUCTION MULTI-UNITS

Using temporary PEEK sleeve for screw retained abutment

TGAS1



Temporary PEEK sleeve



Using burned-out plastic sleeve for individual construction production

Plastic VAAS

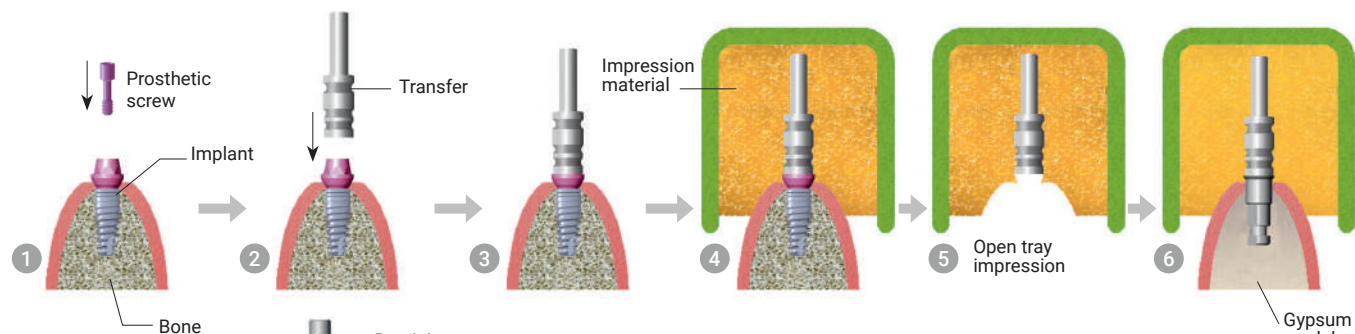


Burned-out plastic sleeve

SAES15



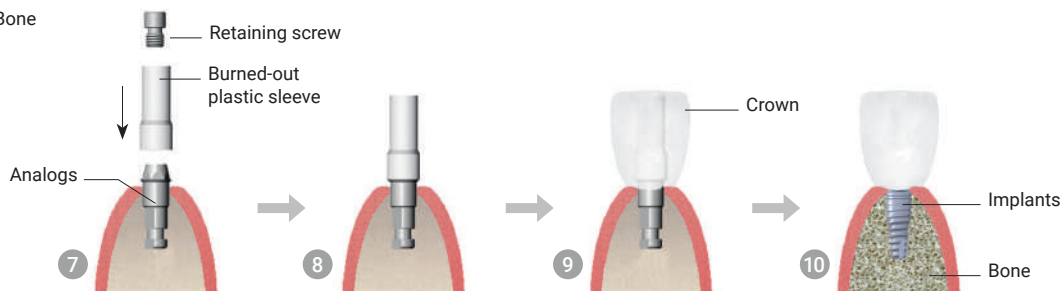
Transfer



IAES

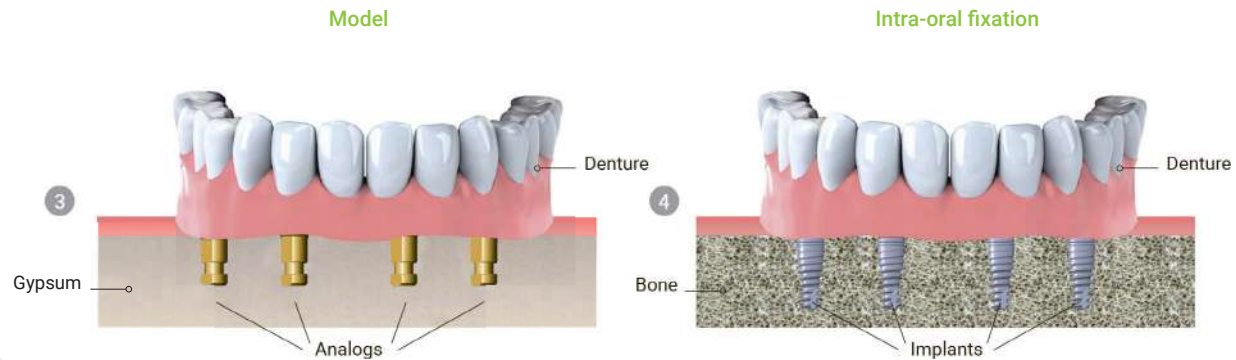
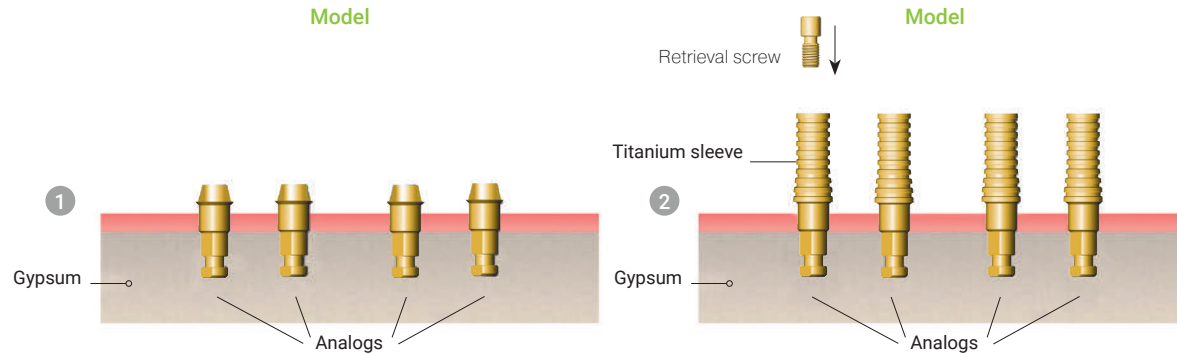


Laboratory Analog



MANUAL II. FIXED BRIDGE CONSTRUCTION

Using titanium sleeve

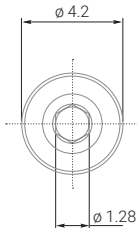
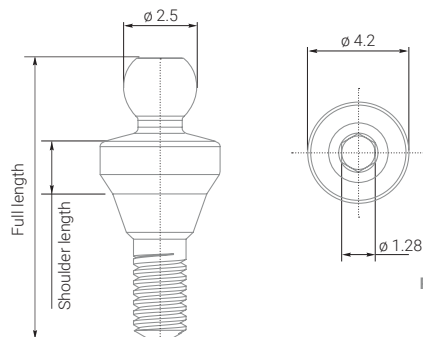


BALL ATTACHMENTS

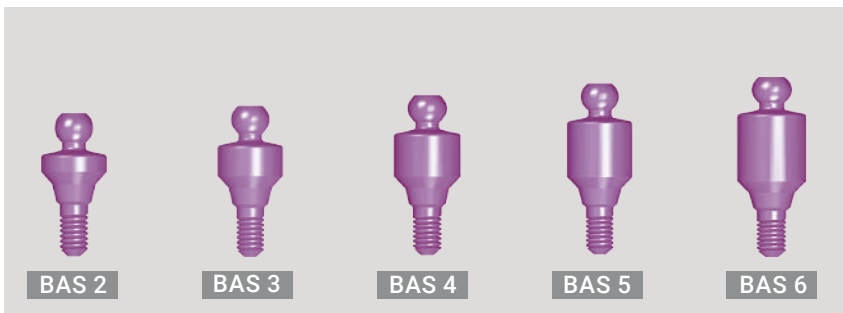
Standard platform

INTERNAL HEX 2.1

Each ball attachment should be supported by metal cap with 3 caps applied in the following sequence: Metal ← Soft ← Standard ← Hard to ensure the most comfortable adaptation of the patient to his new dental prosthesis.



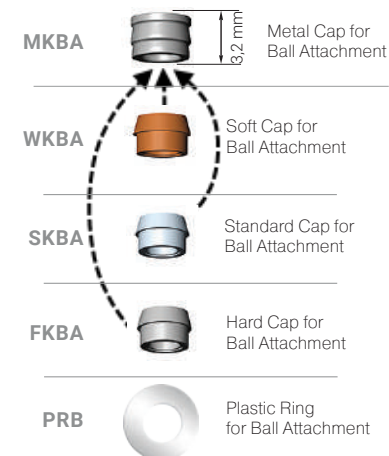
PRODUCT CODE



	BAS 2	BAS 3	BAS 4	BAS 5	BAS 6
DIAMETER	4.2 mm	4.2 mm	4.2 mm	4.2 mm	4.2 mm
SHOULDER LENGTH	2 mm	3 mm	4 mm	5 mm	6 mm
FULL LENGTH	9,95 mm	10,95 mm	11,95 mm	12,95 mm	13,95 mm

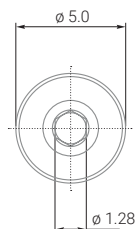
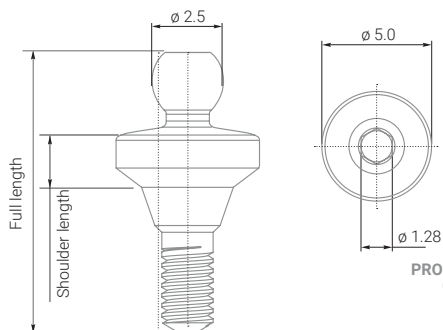
MATERIAL Titanium Grade 5

Ball attachment for overdentures and removable dentures fixation for standard platform (2.1 mm) as an element for dental prosthetics on two or more implants. It is installed using universal or hand prosthetic insertion driver.

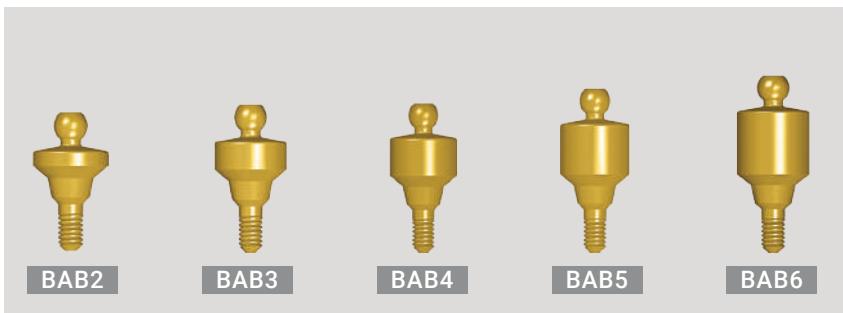


Wide platform

INTERNAL HEX 2.5



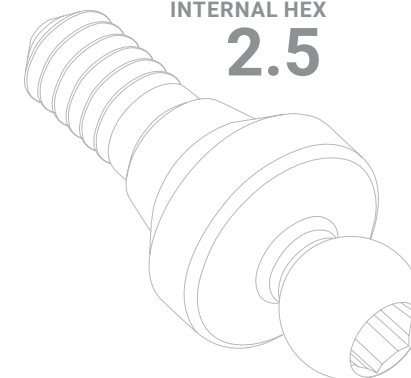
PRODUCT CODE



	BAB2	BAB3	BAB4	BAB5	BAB6
DIAMETER	5.0 mm	5.0 mm	5.0 mm	5.0 mm	5.0 mm
SHOULDER LENGTH	2 mm	3 mm	4 mm	5 mm	6 mm
FULL LENGTH	10,6 mm	11,6 mm	12,6 mm	13,6 mm	14,6 mm

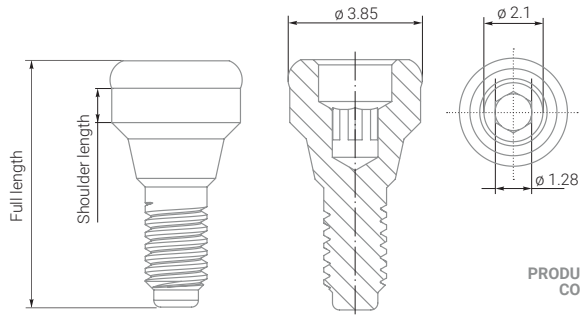
MATERIAL Titanium Grade 5

Ball attachment for overdentures and removable dentures fixation for wide platform (2.5 mm) as an element for dental prosthetics on two or more implants. It is installed using universal or hand prosthetic insertion driver.



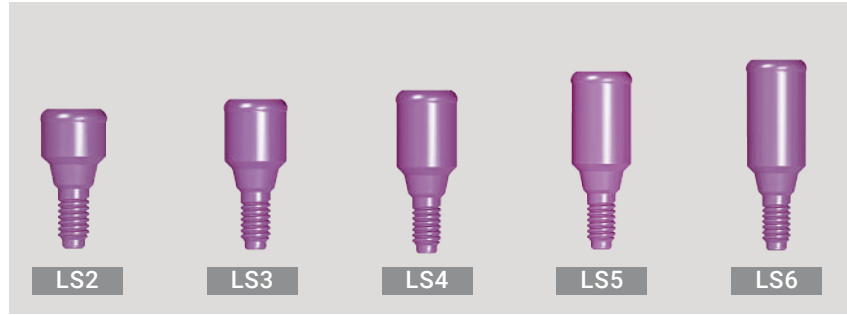
LOCATORS

Standard platform



MATERIAL Titanium Grade 5

PRODUCT CODE

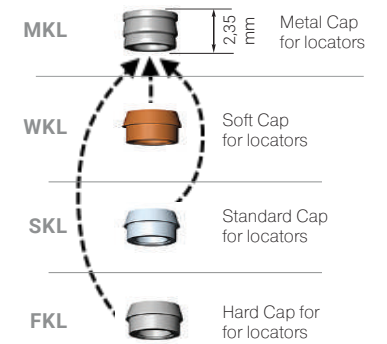


DIAMETER	3.85 mm	3.85 mm	3.85 mm	3.85 mm	3.85 mm
SHOULDER LENGTH	2 mm	3 mm	4 mm	5 mm	6 mm
FULL LENGTH	8,2 mm	9,2mm	10,2 mm	11,2 mm	12,2mm

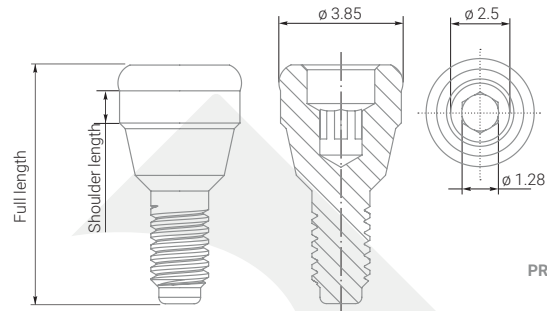
Locators for overdentures and removable dentures fixation for standard platform (2.1 mm) as an element for dental prosthetics on two or more implants. It is installed using universal or hand prosthetic insertion driver.

INTERNAL HEX 2.1

Each ball attachment should be supported by metal cap with 3 applied in the following sequence: Metal ← Soft ← Standard ← Hard to ensure the most comfortable adaptation of the patient to his new dental prosthesis.

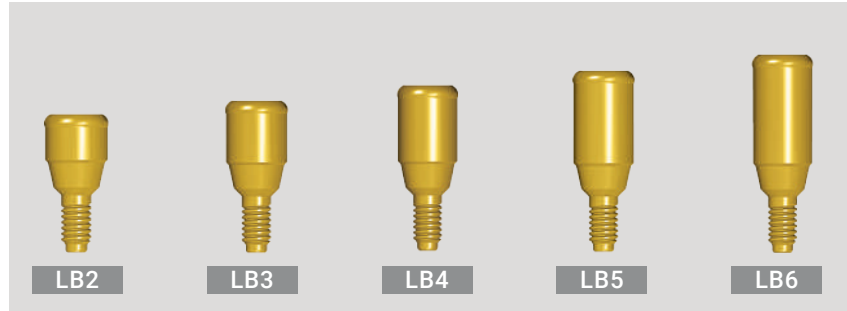


Wide platform



MATERIAL Titanium Grade 5

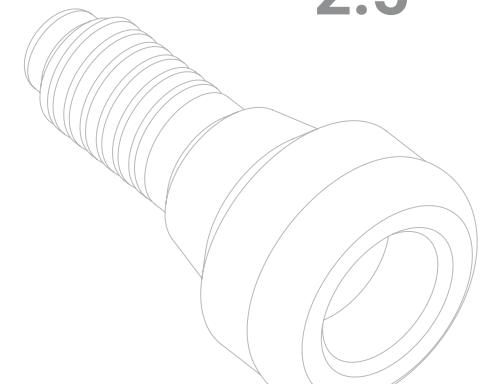
PRODUCT CODE



DIAMETER	3.85 mm	3.85 mm	3.85 mm	3.85 mm	3.85 mm
SHOULDER LENGTH	2 mm	3 mm	4 mm	5 mm	6 mm
FULL LENGTH	8,2 mm	9,2mm	10,2 mm	11,2 mm	12,2mm

Locators for overdentures and removable dentures fixation for wide platform (2.5 mm) as an element for dental prosthetics on two or more implants. It is installed using universal or hand prosthetic insertion driver.

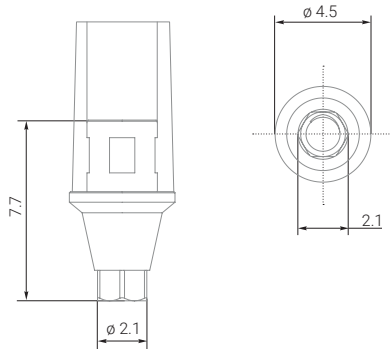
INTERNAL HEX 2.5



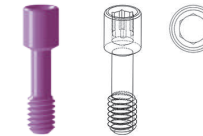
TITANIUM BASIS WITH A PLASTIC CAP

Standard platform

INTERNAL HEX
2.1



Each abutment set includes:



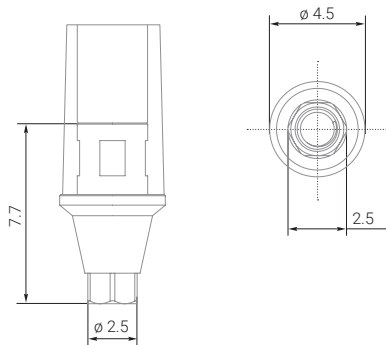
PROSTHETIC SCREW

MATERIAL Titanium Grade 5

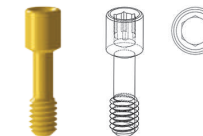
DIAMETER	4.5 mm
LENGTH	7.7 mm

Wide platform

INTERNAL HEX
2.5



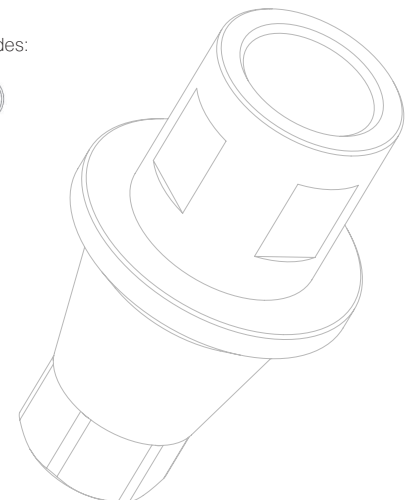
Each abutment set includes:



PROSTHETIC SCREW

MATERIAL Titanium Grade 5

DIAMETER	4.5 mm
LENGTH	7.7 mm



TITANIUM BASIS WITH A PLASTIC CAP

Manual

Titanium basis with a burnout plastic cap simplifies the technician's work, while the crown is being modeled, as it is burnt out and is not subject to compression or deformation.

This suprastructure is used for manufacturing of individual crowns bonded to the standard base. A plastic sleeve burns out at high temperatures saving the accuracy between a titanium base and future crown. The impression obtained by the standard direct method is passed to the technical laboratory along with the suprastructure.

Step 1:

A lab technician makes a gypsum model and fixates a Titanium platform to it together with a plastic cap.

Step 2:

A lab technician forms a wax model of the future crown on the cap.

Step 3:

A formed wax model along with the cap is being removed by lab technician from the titanium basis.

Step 4:

The model along with the cap is transmitted to the laboratory for the future crown basis casting.

Step 5:

In the casting laboratory a sprue is being attached to the wax. The sprue in its turn is attached to the main sprue, forming the sprue tree.

Step 6:

A metal ring is being put on the sprue tree. This metal ring will serve as a form for filling the investment material.

Step 7:

The form with the sprue tree is filled in with investment material (special high-temperature pulp for casting).

Step 8:

After solidification of the investment material, the form is placed into a muffle furnace. The wax and the ash-free sleeve are burnt out at a temperature of 900-1100 C° forming a blow hole for future casting.

Step 9:

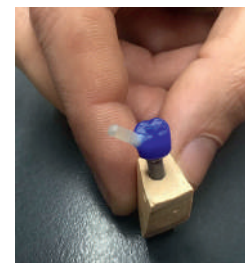
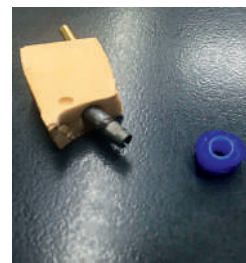
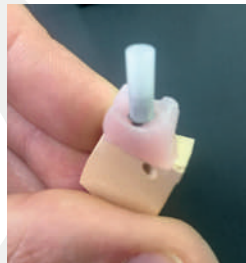
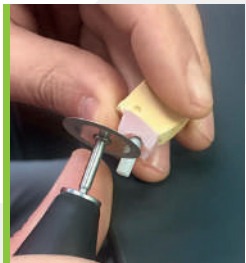
The blow hole, formed by burning out of wax and plastic, is filled with the necessary metal fluid alloy or ceramic. Using the method of vacuum or centrifugal casting, the blow holes are filled in with dental alloy (CoCr or NiCr).

Step 10:

The crown is released from sprues. After sandblasting, it is covered by ceramic to undergo heat treatment.

Step 11:

Prefabricated crown is bonded to the titanium platform with chemical cure composite.



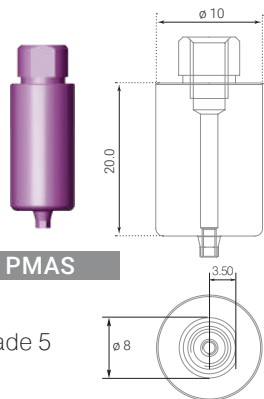
PROSTHETICS FOR CAD/CAM

Standard platform

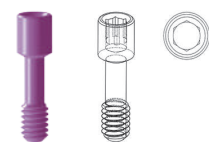
PREMILL ABUTMENT

DIAMETER 10 mm

FUNCTIONAL LENGTH 20.0 mm



Each platform set includes:

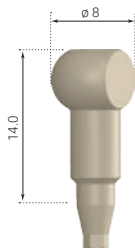


PROSTHETIC SCREW

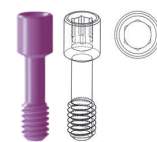
PRODUCT CODE **PMAS**

MATERIAL
Titanium Grade 5

Scanmarker for CAD/CAM



Each platform set includes:



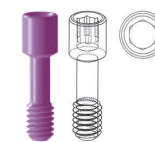
PROSTHETIC SCREW

PRODUCT CODE **STPS**

MATERIAL
PEEK

Titanium Scan-abutment for CAD/CAM

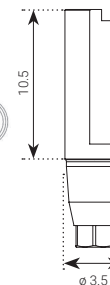
Each platform set includes:



PROSTHETIC SCREW

PRODUCT CODE **STPS-Ti**

MATERIAL
Titanium Grade 5

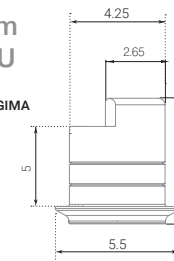


Titanium platform for CAD/CAM MU



PRODUCT CODE **TPMU**

Screw for GIMA is included *

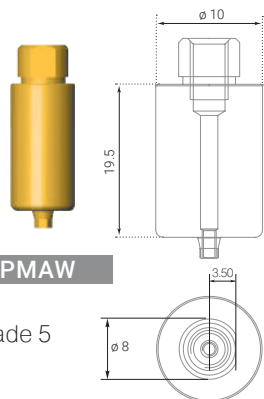


Wide platform

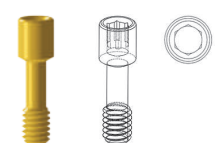
PREMILL ABUTMENT

DIAMETER 10 mm

FUNCTIONAL LENGTH 19.5 mm



Each platform set includes:

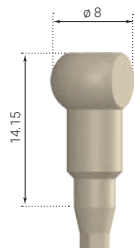


PROSTHETIC SCREW

PRODUCT CODE **PMAW**

MATERIAL
Titanium Grade 5

Scanmarker for CAD/CAM



Each platform set includes:



PROSTHETIC SCREW

PRODUCT CODE **STPB**

MATERIAL
PEEK

Titanium Scan-abutment for CAD/CAM

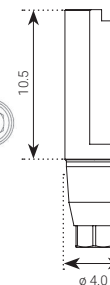
Each platform set includes:



PROSTHETIC SCREW

PRODUCT CODE **STPB-Ti**

MATERIAL
Titanium Grade 5

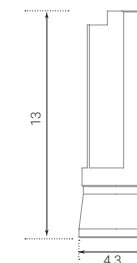


Scan Abutment for MU



PRODUCT CODE **STP MU**

Screw for GIMA is included *



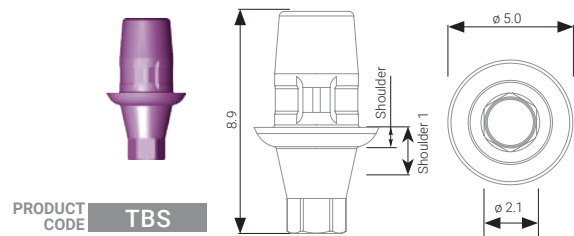
MATERIAL
PEEK

PROSTHETICS FOR CAD/CAM

Standard platform

Ti Base S

DIAMETER 5.0 mm
FUNCTIONAL LENGTH 4.65 mm
SHOULDER 1 mm

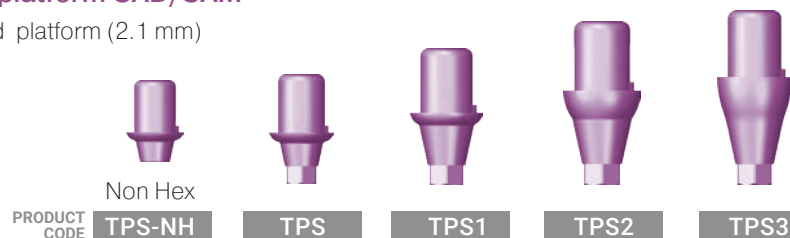


PRODUCT CODE **TBS**

MATERIAL
Titanium Grade 5

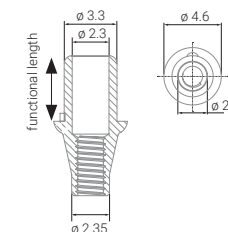
Titanium platform CAD/CAM

for standard platform (2.1 mm)

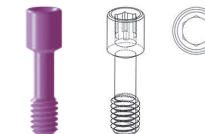


	Non Hex	TPS	TPS1	TPS2	TPS3
DIAMETER	4.6 mm	4.6 mm	4.6 mm	4.6 mm	4.6 mm
FUNCTIONAL LENGTH	4.1 mm	4.1 mm	4.1 mm	4.1 mm	4.1 mm
SHOULDER	0.5 mm	0.5 mm	1 mm	2 mm	3 mm
SHOULDER 1	1.3 mm	1.3 mm	2.3 mm	3.3 mm	4.3 mm

MATERIAL
Titanium Grade 5



Each platform set includes:

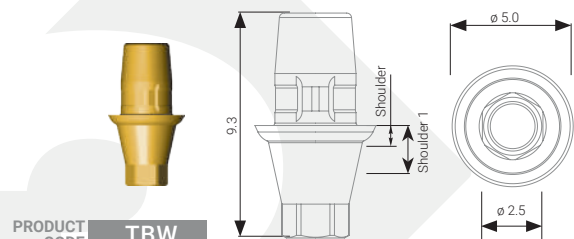


PROSTHETIC SCREW

Wide platform

Ti Base W

DIAMETER 5.0 mm
FUNCTIONAL LENGTH 4.65 mm
SHOULDER 1 mm

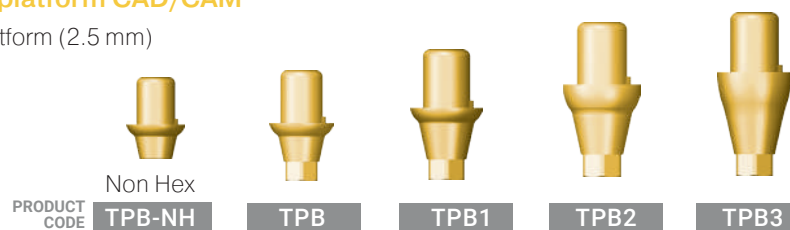


PRODUCT CODE **TBW**

MATERIAL
Titanium Grade 5

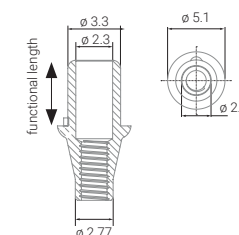
Titanium platform CAD/CAM

for wide platform (2.5 mm)

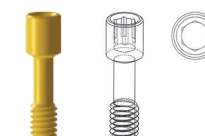


	Non Hex	TPB	TPB1	TPB2	TPB3
DIAMETER	5.1 mm	5.1 mm	5.1 mm	5.1 mm	5.1 mm
FUNCTIONAL LENGTH	4.05 mm	4.1 mm	4.1 mm	4.1 mm	4.1 mm
SHOULDER	0.5 mm	0.5 mm	1 mm	2 mm	3 mm
SHOULDER 1	1.3 mm	1.3 mm	2.3 mm	3.3 mm	4.3 mm

MATERIAL
Titanium Grade 5



Each platform set includes:

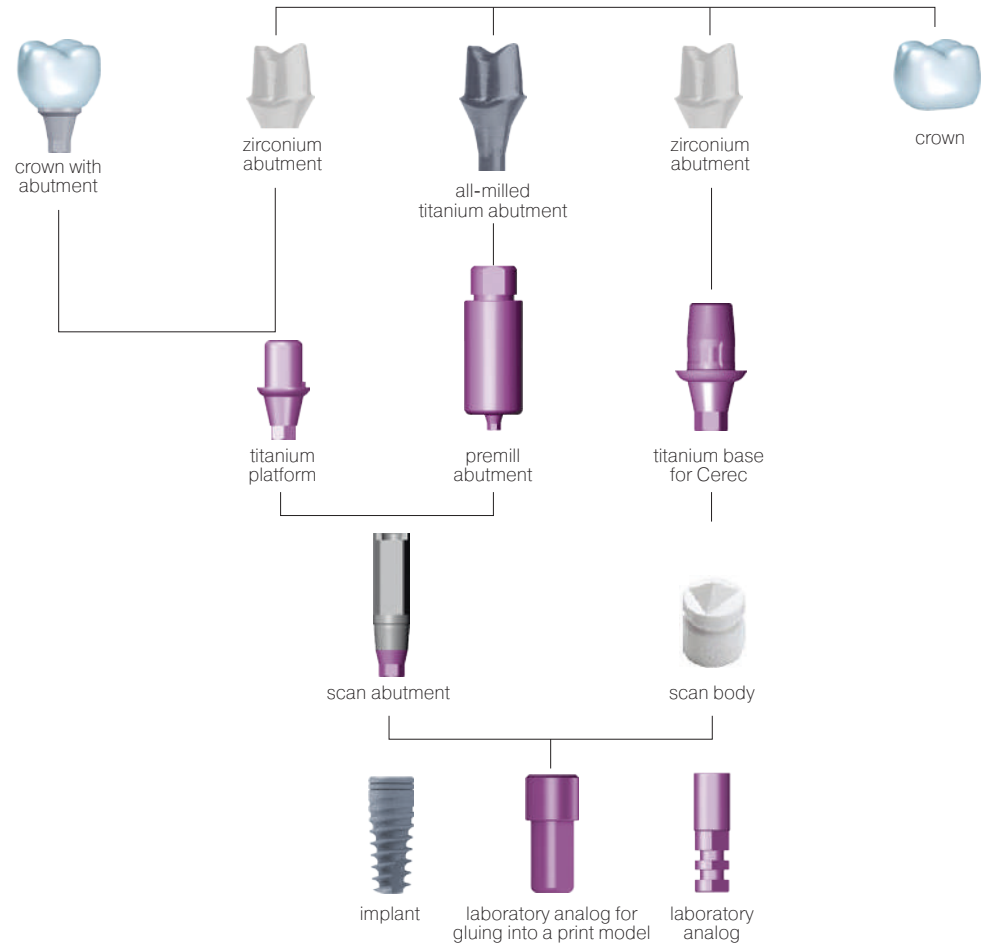


PROSTHETIC SCREW

DIGITAL PROTOCOL FOR CREATING AN ORTHOPEDIC STRUCTURE



Home page bio3-implants.com contains the following libraries available for download
exocad libraries, 3SHAPE libraries



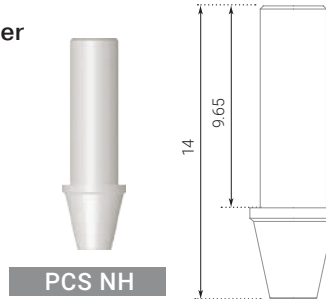
BURNOUT ABUTMENTS

Standard platform

For bridge construction

DIAMETER	4.2 mm
LENGTH	14 mm

Plastic Cylinder Abutment
Non Hex

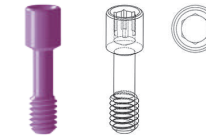


PCS NH

MATERIAL
Burned out plastic



Each abutment set includes:



PROSTHETIC SCREW

Wide platform

For single construction

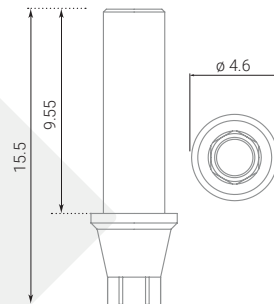
DIAMETER	4.6 mm
LENGTH	15.5 mm

Burnout abutment

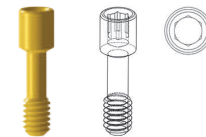
for standard platform (2.5 mm) is intended for individual orthopedic constructions.

PRODUCT CODE

PCB



Each abutment set includes:

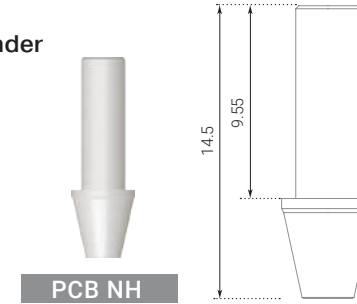


PROSTHETIC SCREW

Plastic Cylinder Abutment
Non Hex

DIAMETER	4.6 mm
LENGTH	14.5 mm

For bridge construction

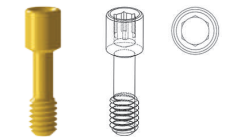


PCB NH

MATERIAL
Burnout plastic



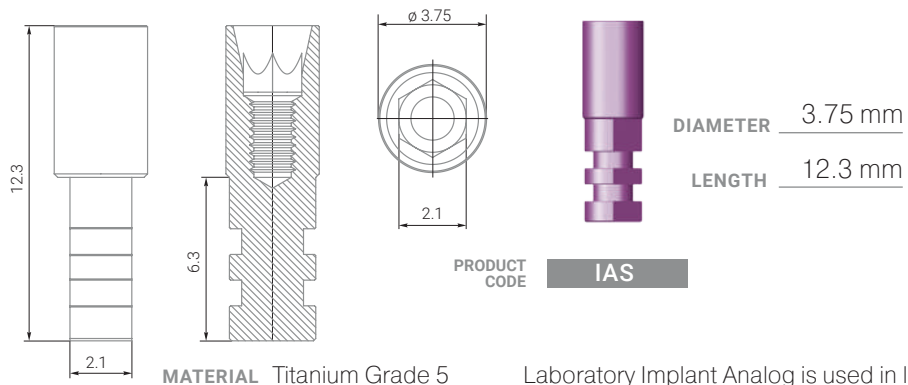
Each abutment set includes:



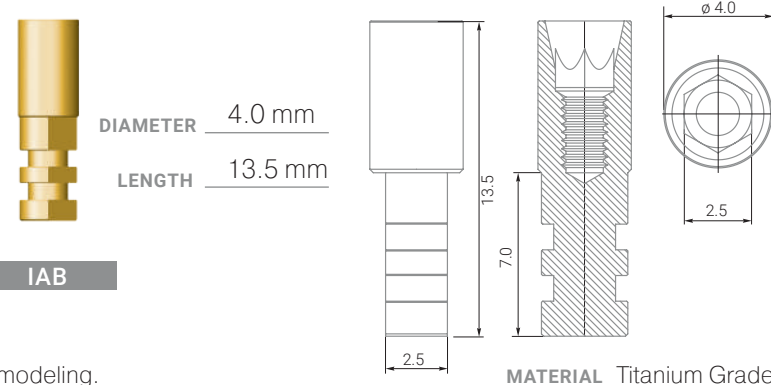
PROSTHETIC SCREW

LABORATORY IMPLANT ANALOGS

STANDARD PLATFORM



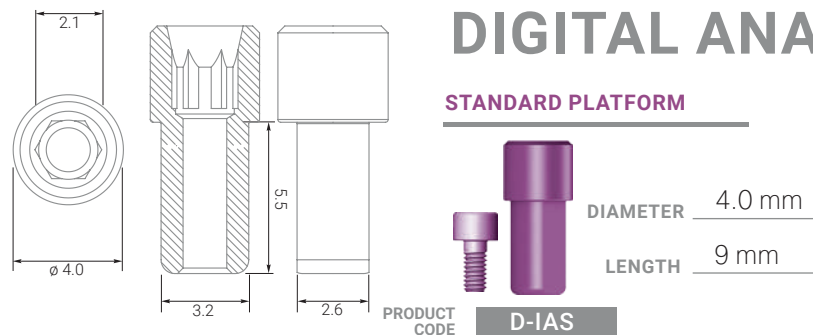
WIDE PLATFORM



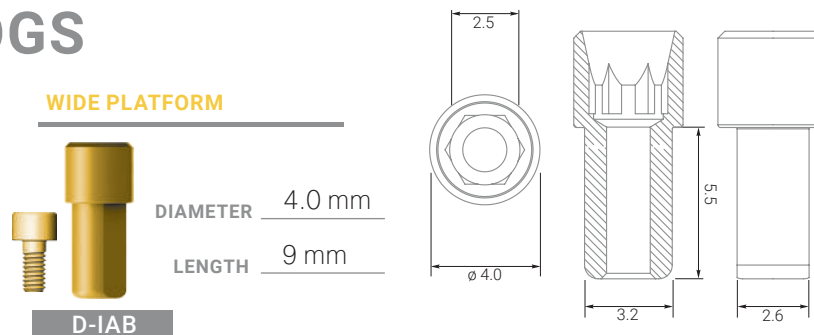
Laboratory Implant Analog is used in laboratory modeling.

DIGITAL ANALOGS

STANDARD PLATFORM

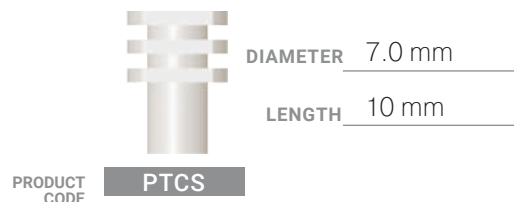


WIDE PLATFORM

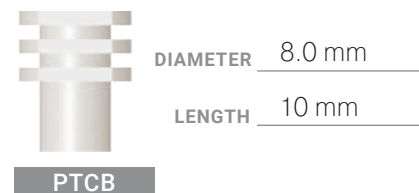


PLASTIC TRANSFER-CAP

STANDARD PLATFORM



WIDE PLATFORM




IMPRESSION TRANSFERS FOR OPEN TRAY


Impression Suprastructures

	STANDARD PLATFORM	WIDE PLATFORM
DIAMETER	4.2 mm	5.1 mm
LENGTH	17.85 mm	18.45 mm

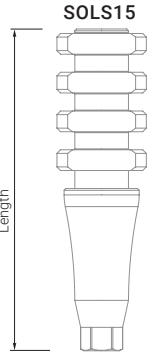
MATERIAL Titanium Grade 5



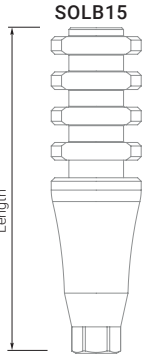
PRODUCT CODE **SOLS15**



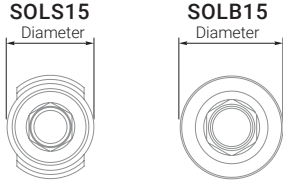
PRODUCT CODE **SOLB15**



SOLS15



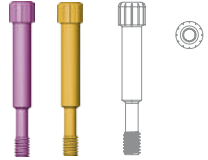
SOLB15



SOLS15
Diameter

SOLB15
Diameter

Each transfers set includes:




SCREW SFT22


IMPRESSION TRANSFERS FOR CLOSED TRAY

	STANDARD PLATFORM	WIDE PLATFORM
DIAMETER	4.2 mm	5.1 mm
LENGTH	13.75 mm	14.35 mm

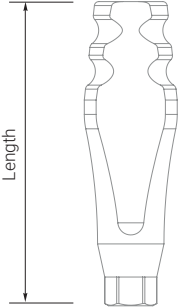
MATERIAL Titanium Grade 5



PRODUCT CODE **SGLS9**




PRODUCT CODE **SGLB9**



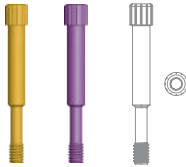
SGLS9

SGLB9



Diameter

Each transfers set includes:



SCREW SFT17

Bio3 SURGICAL KIT

For a quick and easy dental surgery

**STANDARD
PLATFORM**

**WIDE
PLATFORM**

- High-class surgical steel
- Fast and simple implant placement
- Two sets of stoppers
- Compact size



COMPONENTS OF THE SURGICAL KIT

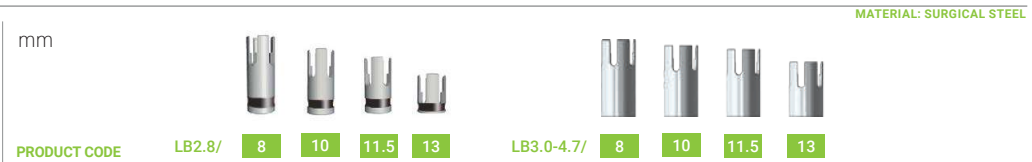
SURGICAL DRILLS

The conical surgical drills without internal cooling with diamond type coating.



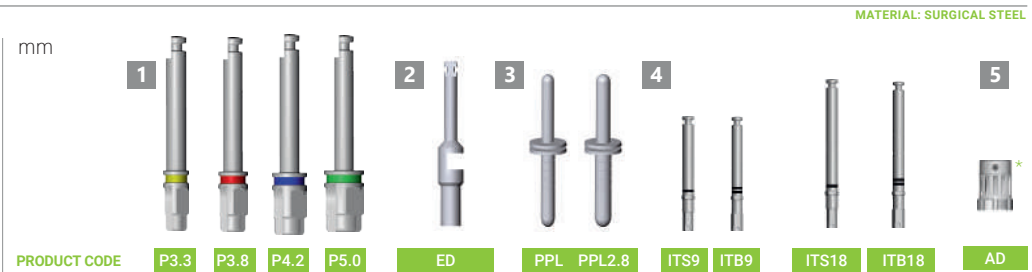
DRILL STOPPERS

Stoppers for drills diameter – 2.0 and 2.8
For drilling depth limitation



SUPPORTING INSTRUMENTS

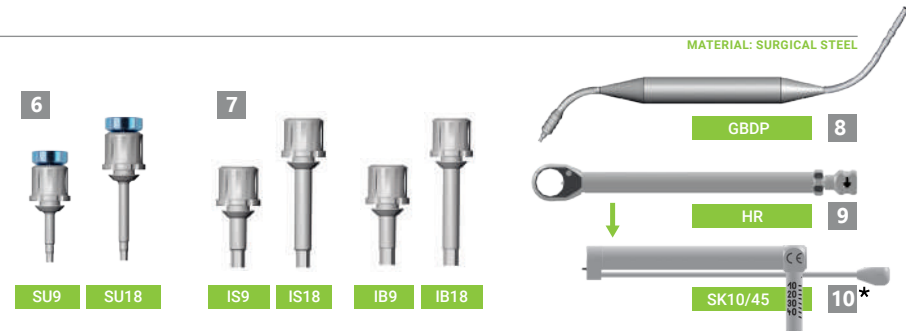
- 1 Profile drills
- 2 Drill extension
- 3 Parallel pin x 2
For socket direction and depth identification
- 4 Implant driver for implant retrieval
- 5 *Adapter for ratchet wrench



* Used in connection with implant driver to extract the implant from the flask

INSTRUMENTS

- 6 Universal screwdriver for screws 9 mm and 18 mm
For prosthetic screws, abutments, healing caps and cover screws.
- 7 Implant drivers 9mm and 18mm
- 8 Depth gauge
- 9 Ratchet wrench for implant placement
- 10 Torque wrench adaptor, force 10/45H*



*tool is not included in the set, can be ordered additionally

Bio3 GUIDE SURGICAL KIT

Bio3 IMPLANTS

Premium Dental Implants



Guide Surgical Kit

GSK



STANDARD PLATFORM

WIDE PLATFORM

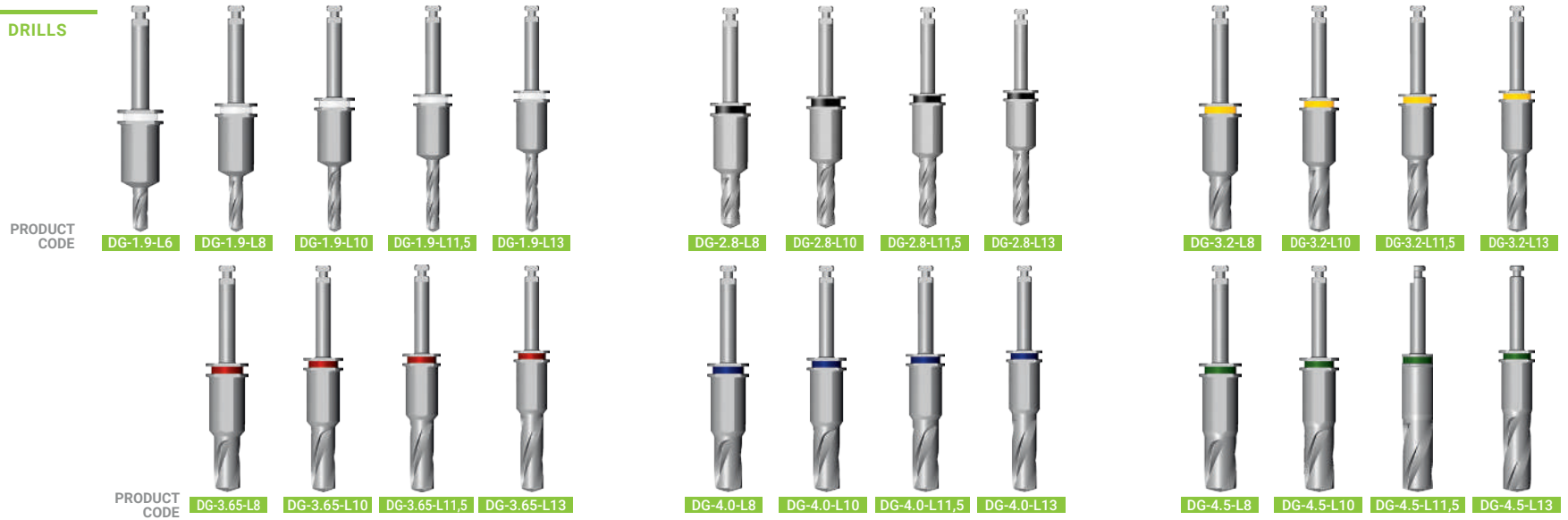


***is not included in GUID SURGICAL KIT, can be ordered additionally*

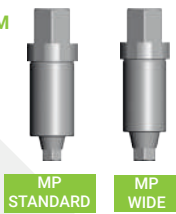
***Surgical guide's drilling template can be printed in any available technical laboratory.*

COMPONENTS OF THE SURGICAL GUIDE KIT

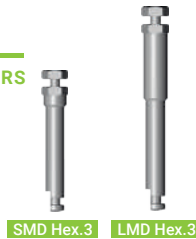
DRILLS



MOUNTER PLATFORM



MOUNT DRIVERS



RATCHET ADAPTOR



TISSUE PUNCH



BONE MILL



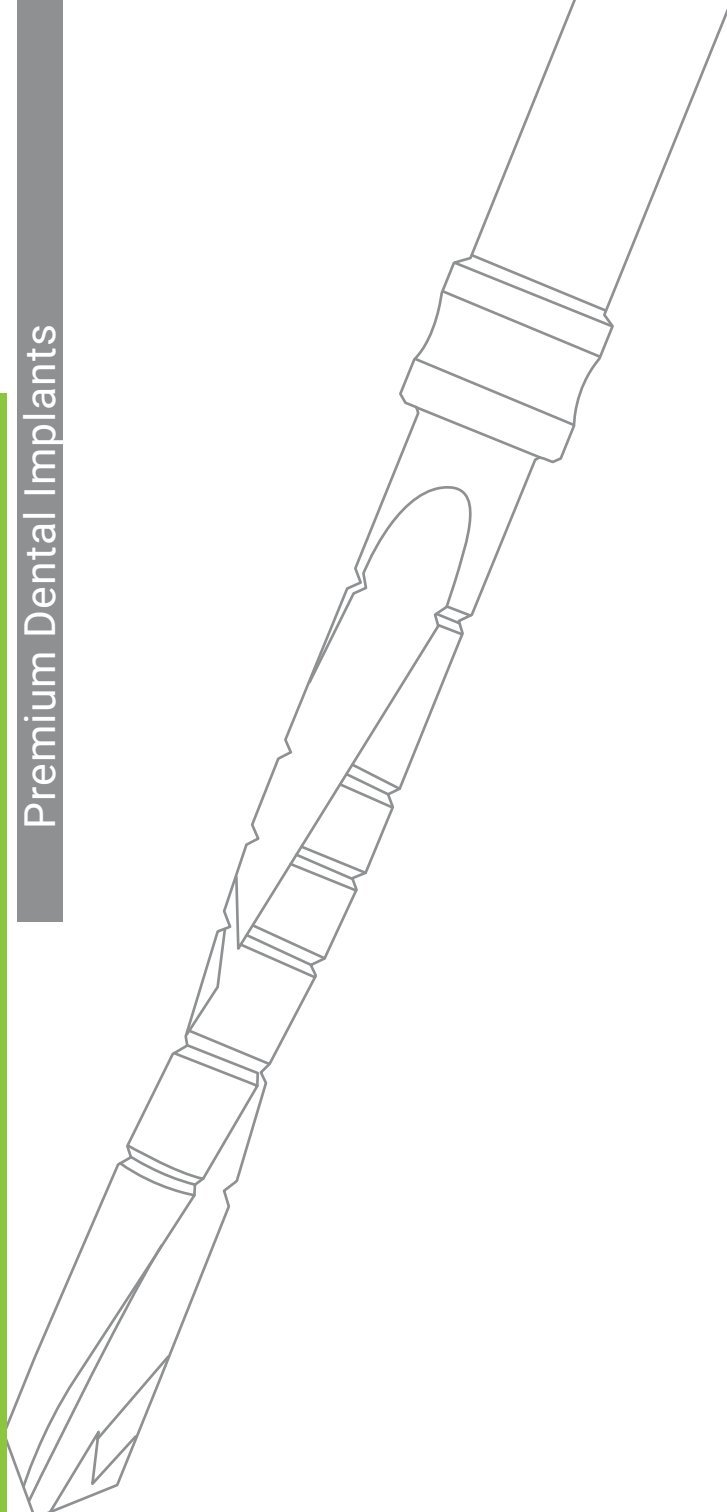
UNIVERSAL SCREWDRIVER FOR SCREWS 9 mm and 18 mm



*is not included in GSK, can be ordered additionally

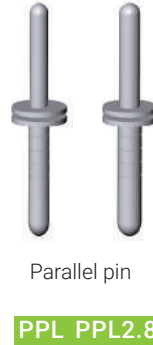
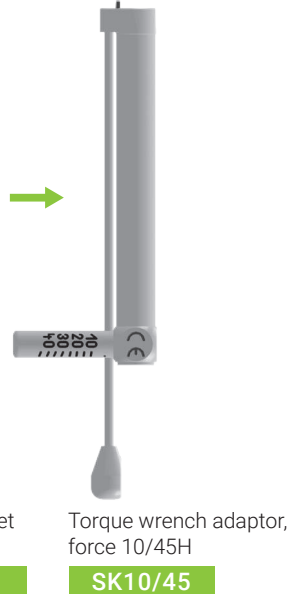
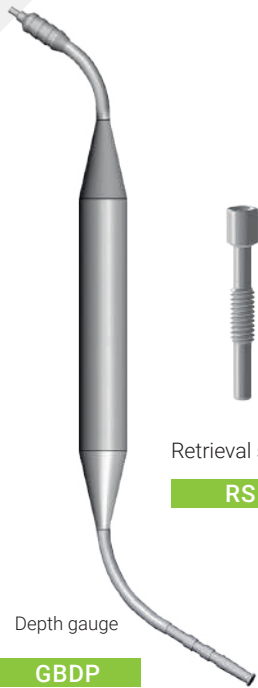
Bio3 IMPLANTS

Premium Dental Implants

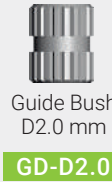


INSTRUMENTS

INSTRUMENTS



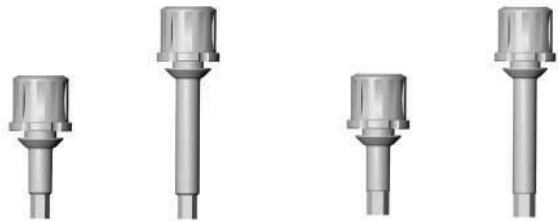
Drill guide is placed inside the prepared drilling template and is intended to guide the drills and implant placement.



for Surgical Guide Pilot drilling only

IMPLANT DRIVERS

	STANDARD PLATFORM		WIDE PLATFORM	
DIAMETER	2.1 mm	2.1 mm	2.5 mm	2.5 mm
LENGTH	9 mm	18 mm	9 mm	18 mm



PRODUCT CODE **IS9** **IS18** **IB9** **IB18**

Implant driver of a different length – 9 mm and 18 mm for range ratchet

MATERIAL Surgical steel

IMPLANT DRIVER (for implant retrieval)

	STANDARD PLATFORM		WIDE PLATFORM	
DIAMETER	2.1 mm	2.1 mm	2.5 mm	2.5 mm
LENGTH	9 mm	18 mm	9 mm	18 mm



PRODUCT CODE **ITS9** **ITS18** **ITB9** **ITB18**

Adapters are used for implant installation with handpiece – 9 mm and 18 mm

MATERIAL Surgical steel

ADAPTER FOR RATCHET WRENCH



AD

Adapter goes into the ratchet and serves as the connection between the wrench and implant driver

STOPPERS FOR PILOT DRILLS

DIAMETER 2.8 mm

Stoppers for cylinder pilot drills, diameter 2.0 and 2.8 mm



LB2.8/ 8 10 11.5 13

DIAMETER 3.0-4.7 mm

Stoppers for drill TCS 3.0, 3.5, 3.9, 4.7, diameter 3.0-4.7 mm



LB3.0-4.7/ 8 10 11.5 13

MATERIAL Surgical steel

WRENCHES FOR SUPRASTRUCTURES

For both platforms

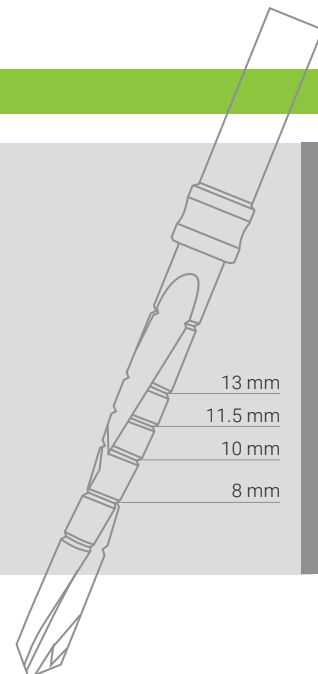


SU9 SU18

Universal wrench of 9 mm and 18 mm length.
For prosthetic screws, cover screws and other accessories.

SURGICAL TAPERED DRILLS

Diamond-like coating



STANDARD PLATFORM

WIDE PLATFORM

MARK DRILL



TCB1.5
1.5 mm

CYLINDRICAL PILOT DRILLS



TCB2.0
2.0 mm



TCS2.8
2.8 mm

TAPERED DRILLS

Please note:
Cutting instruments with diamond-like coating should generally be replaced after 50 autoclaving. Blunt or damaged instruments must be replaced immediately.

Surgical tapered drills of various diameters without inner cooling.



TCS3.0
3.0 mm



TCS3.5
3.5 mm



TCS3.9
3.9 mm



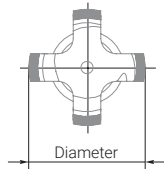
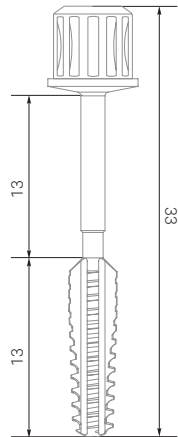
TCS4.7
4.7 mm

MATERIAL Surgical steel

Diameter

BONE TAPS FOR Bio3 PROGRESSIVE IMPLANTS

Bio3 Progressive



PRODUCT CODE

TSP3.3

TSP3.8

TSP4.2

TSP5.0

DIAMETER

3.3 mm

3.8 mm

4.2 mm

5.0 mm

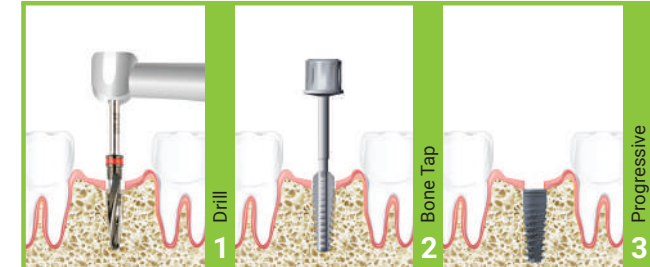
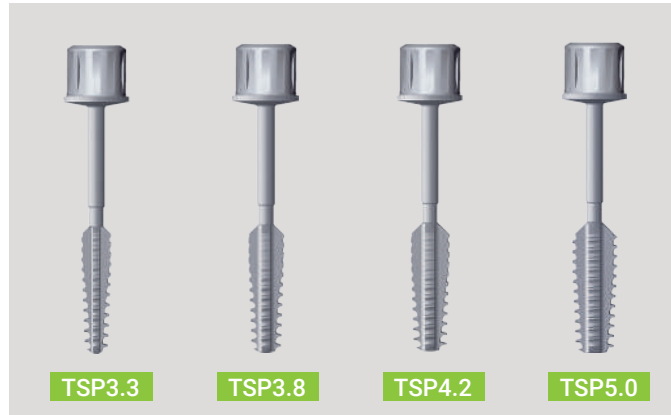
LENGTH

13 mm

13 mm

13 mm

13 mm

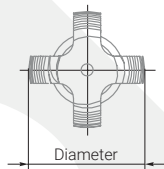
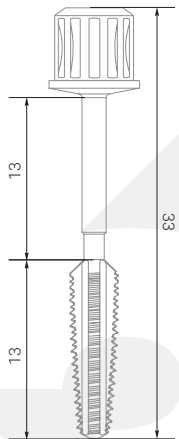


It is recommended to use them for I and II bone types.
For range ratchet.

MATERIAL Surgical steel

BONE TAPS FOR Bio3 ADVANCED IMPLANTS

Bio3 Advanced



PRODUCT CODE

TS3.3

TS3.8

TS4.2

TS5.0

DIAMETER

3.3 mm

3.8 mm

4.2 mm

5.0 mm

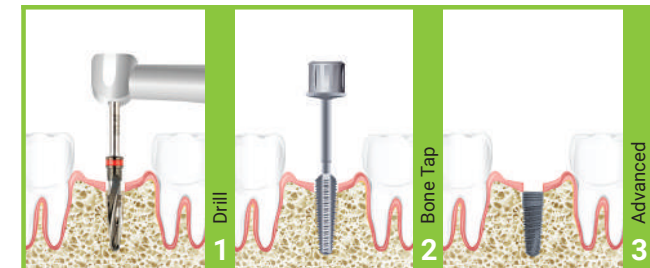
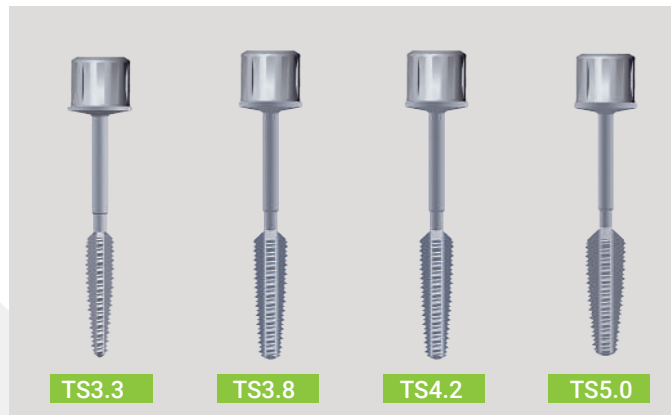
LENGTH

13 mm

13 mm

13 mm

13 mm



It is recommended to use them for I and II bone types.
For range ratchet.

MATERIAL Surgical steel

Bio3 IMPLANTS

Premium Dental Implants



SUPPORTIVE PRODUCTS

Bio3 BONE GRAFT

MATERIAL FOR BONE REGENERATION



NATURAL OSTEOPLASTIC MATERIAL MADE OF HIGHLY PURIFIED BULL BONE

Bio3 BONE GRAFT is the natural osteoplastic material made of highly purified bull bone.

It is a safe transplantation material from Switzerland without any cell elements and protein particles. A unique technology of multi-level bone tissue purification combined with a method of heat treatment allows removing all organic components from the material and excluding any potential immune reactions.

Bio3 Bull Bone Graft possesses high osteogenic properties and biological compatibility with strongly marked hydrophilic qualities.

SIZE TABLE FOR BONE FRACTURE TYPES

BULL BONE (fracture: 1 - 2 mm)

B3G102005	Bio3Bone Microchips (0,5 g) 1 ml
B3G102010	Bio3Bone Microchips (1 g) 2 ml
B3G102020	Bio3Bone Microchips (2 g) 4 ml

BULL BONE (fracture: 0,25 - 1 mm)

B3G251005	Bio3Bone Microchips (0,5 g) 1 ml
B3G251010	Bio3Bone Microchips (1 g) 2 ml



Bio3 OSSEOINTEGRATION MONITOR



Penguin^{RFA} – Removes Doubt

In today's implant dentistry, the trend is to minimize the healing periods from short to none, before loading the implant. This puts serious responsibility on the specialists. If conditions are not optimal - poor primary stability may increase the risk of implant failure. Penguin^{RFA} provides accurate and objective measurements of implant stability, serving as a reliable support when taking decisions on when to load.

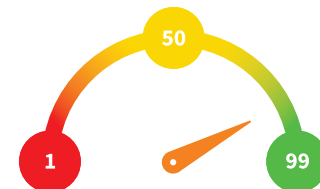


The RFA Technique

Resonance Frequency Analysis (RFA) was introduced into implant dentistry more than 20 years ago. A peg, attached to an implant, receives a signal and the vibration frequency is picked up by the instrument, which is presented as an ISQ (Implant Stability Quotient) value.

Monitor the Osseointegration:

- ▶ Reduces treatment time
- ▶ Manages patient's risks
- ▶ For immediate and postponed loading



The ISQ scale is measured from 1 to 99 and precisely correlates to implant's micromobility. The degree of osseointegration can be measured by taking a baseline value of an implant placement before loading.

Bio3 VITAMIN COMPLEX

A unique Bio3 formula for fast osseointegration and short-term healing process after implant surgery

Bio3
FORMULA



BV



Pre Implant Complex. Powder for oral solution.

Source of calcium, phosphorus, zinc, magnesium, copper, and vitamins K2 and D in optimal for uptake ratio. Calcium and phosphorus are two main microelements, which are responsible for mineralization, integrity, and density of bones and teeth. Magnesium takes part in metabolism of bone tissue, prevents from bone demineralization, and suppresses calcium deposit on the walls of blood vessels, heart valves, muscles, urinary tracts. Zinc is a cofactor of more than 200 enzymes and it acts upon the process of bone tissue remodelling. Copper takes part in building of the most important proteins of conjunctive tissue – collagen and elastin, which creates a matrix of bone and cartilaginous tissue. Manganese normalizes synthesis of glycosaminoglycans, which are essential for formation of the bone and cartilaginous tissue. Vitamin D3 facilitates normal calcium uptake and strengthening of muscle and bone tissues. Vitamin K2 plays an important role in the process of building of bones. Therefore, this complex of minerals and vitamins has a formulation that is similar to formulation of human bone tissue. Due to specially designed and balanced formulation it ensures fast osseointegration and bone tissue restoration after dental implantation.

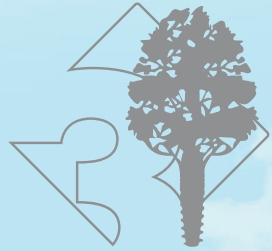
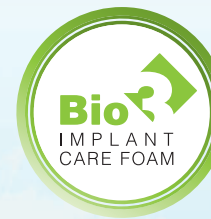
Regenera Complex. Capsules.

Source of collagen, glucosamine, propolis, chondroitin, hyaluronic acid and proline. It is a balanced combination of propolis and main components of organic matrix of bone tissue. Approximately 90% of organic matrix accounts for collagen. Along with mineral components collagen is the main factor determining mechanical properties of the bone. Distinction of bone tissue collagen is a large content of amino acid proline. In addition, the organic matrix contains glycosaminoglycans, chondroitin sulfate and hyaluronic acid. Such combination may be used to boost the immunity, for infection prophylaxis and improvement of wound healing process after dental implantation.

Post Implant Complex. Capsules.

Source of collagen, glucosamine, chondroitin, hyaluronic acid and proline. It is a complex of natural ingredients, which constitute the organic matrix of bone tissue in optimal ratio: collagen / glycosaminoglycans. Approximately 90% of organic matrix accounts for collagen. Along with mineral components collagen is a main factor determining mechanical properties of the bone. Distinction of bone tissue collagen is a large content of amino acid proline. In addition the organic matrix contains glycosaminoglycans, chondroitin sulfate and hyaluronic acid. Complex facilitates fast bone tissue restoration, it stimulates osseointegration process and improves short-term and long-term results of dental implantation.

Bio3 IMPLANT CARE FOAM



Bio3 Implants GmbH Research Institute is continuously working on new developments to offer our patients the best products and services in the field of dental implantology.

As a result, we are happy to present a unique innovation created exceptionally for our patients

Bio3 IMPLANT CARE FOAM.

The exclusive formula of the **BIO3 IMPLANT CARE FOAM** fastens gingival healing processes, reduces the risk of edema and supports your oral health after implant surgery.

The use of the **BIO3 IMPLANT CARE FOAM** noticeably shortens the bone-implant healing and prevents any possible complications. **BIO3 IMPLANT CARE FOAM** is a perfect support for your recovery period after dental surgery.





It is Natural

PRODUCT CATALOG



Bio3 Implants GmbH
Hanauer Strasse, 8, 75181, Pforzheim, Germany
www.bio3-implants.com
+49 723 160 84 104

